

# R LAZY B RANCH



Robert Birklid | 701-924-8876 | Cell 701.678.3528

*Annual Production Sale*  
**Friday, February 19, 2021**

*1:00 p.m. CT • Hub City Livestock, Aberdeen, SD*



*Selling 69 Charolais Bulls*



# Welcome...

As we prepare for the 2021 Bull Sale, we look back on the last year – and what a year it has been. I have to say it has been one of the most challenging years I have ever experienced, and I hope it never happens again. On the bright side, this year's bulls are one of the most consistent set of bulls we have ever offered. The genetics of the herd are working well to produce hard working, high yielding and profit building bulls for you.

As we look forward to seeing you at the sale, we also are aware of the Covid-19 pandemic. Our sale will be live on DV Auctions, so you can buy from the comfort and safety of your home. Please call (701-678-3528) and schedule a farm visit to view the bulls before the sale. We would be happy to show you the bull pen and answer any questions that you have. If you can't make a farm visit, be assured that all bulls sold sight unseen will be guaranteed to your liking. If you want additional pictures of any of the bulls, just call and ask. Videos of all the bulls will be on DV Auction site prior to the sale.

In challenging times, gaining a profit is more difficult. Let us help you add pounds to your calves and gain an edge in the market. Calving ease, growth, size and quality is what we can offer you. Take a look at the EPDs and find your perfect match.

Looking forward to the coming year we are maintaining a positive attitude that things will greatly improve. With calving season just around the corner, we wish you all an easy and prosperous year. May your herd calve easy, losses be low and profits be high!

Sincerely,

*Robert and Vickie Birkliid*

## TERMINAL SIRE INDEX (TSI)

The AICA Terminal Sire Index (TSI) is a formal method of combining Expected Progeny Differences (BWT, WWT, YWT, REA, HCW, MARB and FAT) – into one single value on which to base selection decisions. The TSI uses estimates of the genetic relationships between traits with an economic default value based on three year rolling USDA data.

The TSI represents a dollar index per terminal progeny produced for a bull in the AICA database, ranking them for profit potential. This dollar index is to be interpreted much like single trait EPD. For example, if Sire A's index is \$191.66 and Sire B's index is \$200.00, then we would expect Sire B's offspring to average \$8.34 more net return (\$200.00 minus \$191.66) than Sire A's offspring.

## 2021 CHAROLAIS BREED AVERAGE

|           |           |            |            |             |            |           |
|-----------|-----------|------------|------------|-------------|------------|-----------|
| <b>CE</b> | <b>BW</b> | <b>WW</b>  | <b>YW</b>  | <b>M</b>    | <b>MCE</b> | <b>TM</b> |
| 5.4       | 0.3       | 31         | 58         | 10          | 5.2        | 26        |
| <b>SC</b> | <b>CW</b> | <b>REA</b> | <b>FAT</b> | <b>MARB</b> | <b>TSI</b> |           |
| 1.12      | 20        | 0.69       | 0.009      | 0.11        | 203.97     |           |

*Please bring this catalog with you on sale day!*



### Contact Information

#### R Lazy B Charolais – Robert Birkliid

5851 122nd Ave. SE, Nome, ND 58062  
701-924-8876 (H) • 701-678-3528 (C)  
Vickie Birkliid | 281-773-7646

|   |  |
|---|--|
| <b>Sale Date &amp; Location</b>           | Friday, February 19, 2021 • 1:00 PM CT<br>Hub City Livestock Auction, Aberdeen, S.D.<br>Phone   605-225-3279   |
| <b>Auctioneer</b>                         | Seth Weishaar   605-210-1124   |
| <b>Sale Day Phone</b>                     | Robert's Cell   701-678-3528<br>Vickie's Cell   281-773-7646   |
| <b>Livestock Reps</b>                     | Donnie Liddy; Cattle Business Weekly, 605-695-0113<br>Colt Keffer; AICA, 765-376-8784<br>Dan Piroutek, Tri-State Livestock News, 605-544-3316<br>Mark Hove, Hub City Livestock, 605-290-4896   |
| <b>Ration</b>                             | A TMR diet of corn silage, ground hay, modified distillers and cracked corn is feed after weaning at a rate of 50 MgCal of energy and 13.5 % protein plus Hubbard new Blueprint mineral supplement. Formulated to gain 3.5 # per day and build a breeding animal that will last for years. |
| <b>Feeding Arrangement</b>                | The bulls may be kept, at the ranch, after April 1, 2021, at the buyer's risk for \$2.00/day.  |
| <b>Additional Performance Information</b> | Adj. 365, ADG, and scrotal measurements will be provided sale day. Ultrasound information available sale day.  |
| <b>Guarantee</b>                          | Bulls will be guaranteed to your satisfaction and semen tested before delivery. If there is a problem, we will provide a replacement to use and credit at next year's sale.  |
| <b>Insurance</b>                          | Insurance will be available at a reasonable rate for both life insurance & loss of use coverage from Martin-Trudeau Insurance on sale day.   |
| <b>Trucking</b>                           | A \$100 discount per bull will be given if you take your bull home on sale day. Bulls not taken home on sale day will be trucked back to the ranch for later delivery.   |
| <b>Health</b>                             | The cattle are on a full vaccination program and interstate and Canadian health papers will be provided at no cost.  |
| <b>Sale Terms</b>                         | Cash or check payable sale day unless credit arrangements are made with Robert Birkliid before the sale.   |

Additional information, ultrasound & performance data can be found on the website.

**[www.rlazybranch.com](http://www.rlazybranch.com)**

See page 18 for details on DVAuction.



## A RBM FARGO Y111

Polled  
Reg. #EM809088

BD: 02/05/11 BW: 94 ADJ WW: 782 Ratio: 100  
YW: 1344 ADG: 3.81

WINN MANS LANZA 610S  
**SPARROWS FARGO 811U**  
SPARROWS DELIGHT 74L

SPARROWS DURANGO 585P  
WINN MAN MERIT 036K  
SPARROWS ALLIANCE 513G  
RLTC MISS TRIM 74A

LT EASY PRO 1158 PLD  
**HC RHINESTONE 5100**  
HC JACK 2082

LT UNLIMITED EASE 9108  
LT LADY MACBETH 8413 ETP  
JDJ JACK J258  
HC CADILLAC 8081

They just keep getting the job done. The daughters have proven to be big calf raisers time and again. Semen continues to be sold worldwide and Fargo has left his mark on the Charolais breed. Owned by the LT and RBM ranches in South Dakota.

|      |        |
|------|--------|
| CE   | 7.0    |
| BW   | 1.4    |
| WW   | 54     |
| YW   | 106    |
| MILK | 14     |
| MCE  | 7.6    |
| MTL  | 41     |
| SC   | 1.4    |
| TSI  | 240.91 |
| CW   | 48     |
| REA  | 0.98   |
| FAT  | 0.027  |
| MARB | -0.14  |



## B LT PATRIOT 4004 PLD

Polled  
Reg. #M852822

BD: 02/10/14 BW: 86 ADJ WW: 886 Ratio: 111  
YW: 1400 ADG: 3.53

LT BLUEGRASS 4017 P  
**LT LEDGER 0332 P**  
LT BRENDA 6120 PLD

LT ASSERTION 1277 P  
LT PEARL'S BREEZE 2236 P  
LT RIO BRAVO 3181 P  
LT BRENDA'S EASE 3055PLD

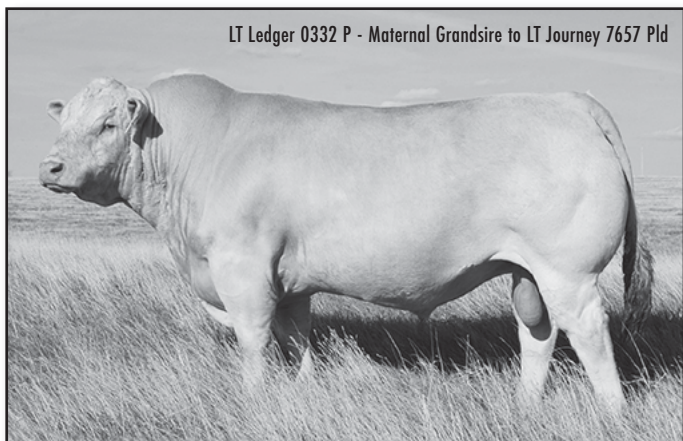
LK DISTANT RIO 900  
**LT MISS RIO 2119**  
LK MISS SILVER T 059

LT SILVER DISTANCE 5342P  
LK MISS RIO 713  
LT SILVER DISTANCE 5342P  
LK MISS T 870

This sire has been good for our herd. Producing great marketable bulls and heifers that have turned into productive cows that have improved our herd. Watch for his pedigree in the cows. Proud to be a part owner.

|      |        |
|------|--------|
| CE   | 0.7    |
| BW   | 0.2    |
| WW   | 41     |
| YW   | 80     |
| MILK | 12     |
| MCE  | -1.4   |
| MTL  | 32     |
| SC   | 1.1    |
| TSI  | 220.55 |
| CW   | 33     |
| REA  | 0.51   |
| FAT  | 0.054  |
| MARB | 0.13   |

LT Ledger 0332 P - Maternal Grandsire to LT Journey 7657 Pld



## C LT JOURNEY 7657 PLD

Polled  
Reg. #M897833

BD: 03/07/17 BW: 90 ADJ WW: 833 Ratio: 116  
YW: 1410 ADG: 4.09

LT QUEST 2203 PLD  
**LT JOURNEY 5208 PLD**  
LT MOLLY 3011 PLD

LT LONG DISTANCE 9001 PLD  
LT ASTA 4255 PLD  
OAKDALE DUKE 9003P  
LT MOLLY 1224 PLD

LT LEDGER 0332 P  
**LT GALA 4822 PLD**  
LK MISS WIND 220

LT BLUEGRASS 4017 P  
LT BRENDA 6120 PLD  
LT WYOMING WIND 4020 PLD  
LK PRIME GAL 408

This bull calves well and has proven growth in his offspring. Nice headed, long bodied with sound feet and structure.

|      |        |
|------|--------|
| CE   | 2.8    |
| BW   | 0.8    |
| WW   | 49     |
| YW   | 95     |
| MILK | 7      |
| MCE  | 1.1    |
| MTL  | 32     |
| SC   | 1.8    |
| TSI  | 239.36 |
| CW   | 24     |
| REA  | 0.62   |
| FAT  | 0.015  |
| MARB | 0.16   |



## D LT RANSOM 8644

Polled  
Reg. #M914463

BD: 02/27/18 BW: 90 ADJ WW: 818 Ratio: 117  
YW: 1300 ADG: 3.24

LT QUEST 2203 PLD  
**LT JOURNEY 5208 PLD**  
LT MOLLY 3011 PLD

LT LONG DISTANCE 9001 PLD  
LT ASTA 4255 PLD  
OAKDALE DUKE 9003P  
LT MOLLY 1224 PLD

LT BLUE VALUE 7903 ET  
**LT SHEILA 337 PLD**  
LT MISS BREEZY 524

LT BLUEGRASS 4017 P  
LT UNLIMITED MAID 7184 P  
LT WYOMING WIND 4020 PLD  
LK PRIME NAOMI 303

This bull was our selection from the LT Ranch sale, and he didn't disappoint. Bulls are thick and wide topped, heifers are the keeping kind. Excellent marbling and carcass traits are bred into this sire.

|      |        |
|------|--------|
| CE   | 3.3    |
| BW   | -0.1   |
| WW   | 33     |
| YW   | 64     |
| MILK | 19     |
| MCE  | 0.4    |
| MTL  | 35     |
| SC   | 0.9    |
| TSI  | 214.59 |
| CW   | 13     |
| REA  | 0.60   |
| FAT  | -0.020 |
| MARB | 0.22   |





**E** **LT TIOGA 4090 PLD** Polled  
Reg. #M852840

|              |          |             |           |      |        |
|--------------|----------|-------------|-----------|------|--------|
| BD: 03/05/14 | BW: 84   | ADJ WW: 758 | Ratio: 97 | CE   | 12.5   |
|              | YW: 1265 | ADG: 3.42   |           | BW   | -3.7   |
|              |          |             |           | WW   | 19     |
|              |          |             |           | YW   | 39     |
|              |          |             |           | MILK | 21     |
|              |          |             |           | MCE  | 9.3    |
|              |          |             |           | MTL  | 30     |
|              |          |             |           | SC   | 0.4    |
|              |          |             |           | TSI  | 192.31 |
|              |          |             |           | CW   | 11     |
|              |          |             |           | REA  | 0.64   |
|              |          |             |           | FAT  | 0.023  |
|              |          |             |           | MARB | 0.18   |

LT EASY PRO 1158 PLD  
**BHC TOP PRO 7025 P**  
 BHC MS WATCHMAN 2053 P  
 LT UNLIMITED EASE 9108  
 LT LADY MACBETH 8413 ETP  
 FRED'S WYOMING WATCHMAN  
 SKYMONT MISS EASE 4109  
 LT SILVER YIELD 3196 P  
 LT MATTIE 9026 POLLED  
**LT BRENDA 8034 PLD**  
 LT BRENDA 6120 PLD  
 LT RIO BRAVO 3181 P  
 LT BRENDA'S EASE 3055PLD

He was used for AI heifers and worked great. Calves are attractive and well muscled.



**F** **HTA UNDECLARED 8115F** Polled  
Reg. #M924864

|              |     |         |        |      |        |
|--------------|-----|---------|--------|------|--------|
| BD: 02/18/18 | BW: | ADJ WW: | Ratio: | CE   | 3.1    |
|              | YW: | ADG:    |        | BW   | 1.7    |
|              |     |         |        | WW   | 37     |
|              |     |         |        | YW   | 74     |
|              |     |         |        | MILK | 6      |
|              |     |         |        | MCE  | 7.7    |
|              |     |         |        | MTL  | 24     |
|              |     |         |        | SC   | 0.7    |
|              |     |         |        | TSI  | 219.10 |
|              |     |         |        | CW   | 30     |
|              |     |         |        | REA  | 0.99   |
|              |     |         |        | FAT  | 0.007  |
|              |     |         |        | MARB | 0.06   |

HTA BRAVIA 855U  
**HTA ASTROID 603D**  
 HTA BRIDGET 704T  
 EATONS LEADER 2233 P  
 HTA BRIDGET PLD 201M  
 M6 GRID MAKER 104 PET  
 HTA BRIDGET 577R  
 C2 ZEPLIN 45Z  
**HTA SARA 447B**  
 HTA SARA 9107W  
 HIGH BLUFF HANK 41R  
 MERIT DENISE 7011T  
 SVS NOBLEMAN 25N  
 HTA SARA 903J

This bull we bought in Canada and has proven himself well on the first calf crop. Calved easy, vigorous at birth, growing well through weaning and feeding well. Easy to like.



**G** **LT COMMISSIONER 5232 PLD** Polled  
Reg. #M866814

|              |          |             |            |      |        |
|--------------|----------|-------------|------------|------|--------|
| BD: 03/14/15 | BW: 91   | ADJ WW: 870 | Ratio: 109 | CE   | 3.4    |
|              | YW: 1365 | ADG: 3.48   |            | BW   | 1.4    |
|              |          |             |            | WW   | 47     |
|              |          |             |            | YW   | 77     |
|              |          |             |            | MILK | -6     |
|              |          |             |            | MCE  | -1.7   |
|              |          |             |            | MTL  | 18     |
|              |          |             |            | SC   | 1.3    |
|              |          |             |            | TSI  | 219.49 |
|              |          |             |            | CW   | 34     |
|              |          |             |            | REA  | 0.73   |
|              |          |             |            | FAT  | 0.047  |
|              |          |             |            | MARB | 0.31   |

LT BLUEGRASS 4017 P  
**LT LEDGER 0332 P**  
 LT BRENDA 6120 PLD  
 LT ASSERTION 1277 P  
 LT PEARL'S BREEZE 2236 P  
 LT RIO BRAVO 3181 P  
 LT BRENDA'S EASE 3055PLD  
 LT EASY PRO 1158 PLD  
**LT BALLET 9219 POLLED**  
 LT BALLET 6233  
 LT UNLIMITED EASE 9108  
 LT LADY MACBETH 8413 ETP  
 EATONS LEADER 2233 P  
 LT BALLET 0024 PLD

He was a walking herd sire and has produced good performance cattle that are high marbling, good gaining cattle.



**H** **LT RUSHMORE 7529 PLD** Polled  
Reg. #M897768

|              |          |             |            |      |        |
|--------------|----------|-------------|------------|------|--------|
| BD: 02/06/17 | BW: 74   | ADJ WW: 781 | Ratio: 109 | CE   | 13.5   |
|              | YW: 1350 | ADG: 3.69   |            | BW   | -5.3   |
|              |          |             |            | WW   | 20     |
|              |          |             |            | YW   | 41     |
|              |          |             |            | MILK | 23     |
|              |          |             |            | MCE  | 1.7    |
|              |          |             |            | MTL  | 33     |
|              |          |             |            | SC   | 0.8    |
|              |          |             |            | TSI  | 195.03 |
|              |          |             |            | CW   | 13     |
|              |          |             |            | REA  | 0.49   |
|              |          |             |            | FAT  | 0.048  |
|              |          |             |            | MARB | 0.21   |

LT RIO BRAVO 3181 P  
**LT RUSHMORE 8060 PLD**  
 LT BRENDA'S EASE 3055PLD  
 LT BLUEGRASS 3417 PLD  
**LT PETRA 5565 PLD**  
 LT PETRA 306 PLD  
 LT RIO BLANCO 1234 P  
 LT 7N OF DUKE 9083 PLD  
 LT UNLIMITED EASE 9108  
 LT BRENDA 1014 PLD  
 LT BLUEGRASS 0330 P  
 LT MARLA 1405 PLD  
 LT LONG DISTANCE 9001 PLD  
 LK MS ROCKETS EDGE 936

He is a very easy calving cleanup bull we used in the heifer pasture.





**LT LANDMARK 5052 PLD** Polled  
Reg. #: M866771

|                     |                 |                    |                   |             |        |
|---------------------|-----------------|--------------------|-------------------|-------------|--------|
| <b>BD:</b> 02/23/15 | <b>BW:</b> 81   | <b>ADJ WW:</b> 901 | <b>Ratio:</b> 117 | <b>CE</b>   | 13.3   |
|                     | <b>YW:</b> 1335 | <b>ADG:</b> 3.19   |                   | <b>BW</b>   | -4.9   |
|                     |                 |                    |                   | <b>WW</b>   | 21     |
|                     |                 |                    |                   | <b>YW</b>   | 43     |
|                     |                 |                    |                   | <b>MILK</b> | 27     |
|                     |                 |                    |                   | <b>MCE</b>  | -14.2  |
|                     |                 |                    |                   | <b>MTL</b>  | 37     |
|                     |                 |                    |                   | <b>SC</b>   | 0.1    |
|                     |                 |                    |                   | <b>TSI</b>  | 194.63 |
|                     |                 |                    |                   | <b>CW</b>   | 5      |
|                     |                 |                    |                   | <b>REA</b>  | 0.81   |
|                     |                 |                    |                   | <b>FAT</b>  | -0.002 |
|                     |                 |                    |                   | <b>MARB</b> | -0.05  |

He is one of the easiest calving sires we have ever used. There is a very uniform group in this year's sale and he works great on the Fargo pedigree.



**WC MILESTONE 8224 P** Polled  
Reg. #: M915078

|                     |               |                    |                   |             |        |
|---------------------|---------------|--------------------|-------------------|-------------|--------|
| <b>BD:</b> 01/06/18 | <b>BW:</b> 71 | <b>ADJ WW:</b> 793 | <b>Ratio:</b> 103 | <b>CE</b>   | 9.5    |
|                     | <b>YW:</b>    | <b>ADG:</b>        |                   | <b>BW</b>   | -1.9   |
|                     |               |                    |                   | <b>WW</b>   | 31     |
|                     |               |                    |                   | <b>YW</b>   | 66     |
|                     |               |                    |                   | <b>MILK</b> | 9      |
|                     |               |                    |                   | <b>MCE</b>  | 9.2    |
|                     |               |                    |                   | <b>MTL</b>  | 25     |
|                     |               |                    |                   | <b>SC</b>   | 1.2    |
|                     |               |                    |                   | <b>TSI</b>  | 220.08 |
|                     |               |                    |                   | <b>CW</b>   | 17     |
|                     |               |                    |                   | <b>REA</b>  | 0.99   |
|                     |               |                    |                   | <b>FAT</b>  | -0.009 |
|                     |               |                    |                   | <b>MARB</b> | 0.12   |

WC BENELLI 2134 P ET  
**WC MILESTONE 5223 P**  
WC LADY BLUE 0506 P

DA PASSPORT 502 P ET  
JWK CLARICE J139 ET  
LT BLUE VALUE 7903 ET  
DS MISS FAB MACK P ET

LT BLUEGRASS 4017 P  
VCRMISDUCHESS9506POLLED  
M6 GRID MAKER 104 PET  
LT PRAIRIE LACE 2317

Cleanup bull for an AI pasture so not a lot of numbers but nice looking, well made cattle. Very correct and thick made.

## Fat Cattle

Reports from customer finished cattle this past year that were mostly sired by our bulls show premiums earned \$2 - \$4 per hundred when sold on a grid and gaining \$1-2 when sold dressed or live due to low backfat and high dressing percentage. Combine that with average or better dry matter conversion and the genetics behind these cattle work as hard as you do.





# 059 RLB LONGFELLOW 059H

Polled  
Reg. #:M944727

BD: 04/06/20 BW: 94 WW: 699 Ratio: 93  
YW: \_\_\_\_\_ ADG: \_\_\_\_\_

LT LEDGER 0332 P  
LT COMMISSIONER 5232 PLD  
LT BALLET 9219 POLLED

LT BLUEGRASS 4017 P  
LT BRENDA 6120 PLD  
LT EASY PRO 1158 PLD  
LT BALLET 6233

KEYS TITAN 62T  
RLB MISS TASHA 059  
RLB MISS TASHA 734T

KEYS CHUMLEY 8R  
MISS KEY QUEEN 112L  
RC MCCOY 2177 PLD  
RLB MS PROFIT H804 PLD

This bull takes after his maternal grandsire in looks and shape. The 059 cow has been a solid producer, putting out multiple high sellers.

|      |        |
|------|--------|
| CE   | -1.1   |
| BW   | 2.8    |
| WW   | 45     |
| YW   | 77     |
| MILK | -3     |
| MCE  | 0.8    |
| MTL  | 20     |
| SC   | 1.0    |
| TSI  | 217.81 |
| CW   | 35     |
| REA  | 0.87   |
| FAT  | 0.007  |
| MARB | 0.14   |

# 124 RLB PATRIOTIC 124H

Polled  
Reg. #:M944774

BD: 03/17/20 BW: 98 WW: 755 Ratio: 103  
YW: \_\_\_\_\_ ADG: \_\_\_\_\_

LT LEDGER 0332 P  
LT PATRIOT 4004 PLD  
LK MISS RIO 2119

LT BLUEGRASS 4017 P  
LT BRENDA 6120 PLD  
LK DISTANT RIO 900  
LK MISS SILVER T 059

RC MCCOY 2177 PLD  
RLB MS MISSY 124Y PLD  
RLB MISSY 523

JGS HOTLINE 9513 ET  
RC MS MONTANA 923 PLD  
RC LIMITLESS 136 PLD  
RLB MS ANNA E520 PLD

This Patriot sired bull is from some old maternal genetics that have stood the test of time in our herd. Extra long and wide topped.

|      |        |
|------|--------|
| CE   | -5.0   |
| BW   | 2.9    |
| WW   | 35     |
| YW   | 66     |
| MILK | 12     |
| MCE  | -0.8   |
| MTL  | 30     |
| SC   | 0.8    |
| TSI  | 207.40 |
| CW   | 33     |
| REA  | 0.65   |
| FAT  | 0.023  |
| MARB | 0.12   |



# 202 RLB MASTERS 202H

Polled  
Reg. #:M944739

BD: 03/30/20 BW: 84 WW: 797 Ratio: 106  
YW: \_\_\_\_\_ ADG: \_\_\_\_\_

LT LEDGER 0332 P  
LT COMMISSIONER 5232 PLD  
LT BALLET 9219 POLLED

LT BLUEGRASS 4017 P  
LT BRENDA 6120 PLD  
LT EASY PRO 1158 PLD  
LT BALLET 6233

KEYS MAGNUM 44U  
RLB MS MASTERS 202Z TWIN  
RLB MS MATTY 429 P

KEYS TEN-ACIOUS 166S  
MISS KEY FAME 111P  
RC MASTER 276 PLD TW  
RLB MS KASSIE 249M P

The Commissioner and 202 cow have done it again. This could be her best calf to date.

|      |        |
|------|--------|
| CE   | 4.5    |
| BW   | 0.9    |
| WW   | 44     |
| YW   | 78     |
| MILK | 1      |
| MCE  | 3.0    |
| MTL  | 23     |
| SC   | 1.5    |
| TSI  | 220.37 |
| CW   | 36     |
| REA  | 0.94   |
| FAT  | 0.024  |
| MARB | 0.14   |

# 111 RLB LONG SHOT 111H

Polled  
Reg. #:M944776

BD: 03/15/20 BW: 80 WW: 723 Ratio: 99  
YW: \_\_\_\_\_ ADG: \_\_\_\_\_

HTA ASTROID 603D  
HTA UNDEFEATED 8115F  
HTA SARA 447B

HTA BRAVIA 855U  
HTA BRIDGET 704T  
C2 ZEPLIN 45Z  
HTA SARA 9107W

LT LONG DISTANCE 9001 PLD  
RLB MISS MCCOY 111Y PLD  
RLB MS MCCOY 930

LT SILVER DISTANCE 5342P  
LT BELLE 7026 P  
RC MCCOY 2177 PLD  
RLB MS CUTTER 407 P

Small head and smooth shoulders will make an easy calving sire. Good stretch will make them grow too.

|      |        |
|------|--------|
| CE   | 7.5    |
| BW   | -1.1   |
| WW   | 23     |
| YW   | 46     |
| MILK | 9      |
| MCE  | 5.3    |
| MTL  | 21     |
| SC   | 0.5    |
| TSI  | 195.30 |
| CW   | 19     |
| REA  | 0.73   |
| FAT  | 0.002  |
| MARB | 0.12   |



# 141 RLB MR COMET 141H

Polled  
Reg. #:M944735

BD: 04/01/20 BW: 84 WW: 772 Ratio: 103  
YW: \_\_\_\_\_ ADG: \_\_\_\_\_

LT LEDGER 0332 P  
LT COMMISSIONER 5232 PLD  
LT BALLET 9219 POLLED

LT BLUEGRASS 4017 P  
LT BRENDA 6120 PLD  
LT EASY PRO 1158 PLD  
LT BALLET 6233

KEYS MAGNUM 44U  
RLB MISS TRISTA 141Y PLD  
RLB MISS TRISTA 732T

KEYS TEN-ACIOUS 166S  
MISS KEY FAME 111P  
RC REWARD 5150  
RLB MS PAULETTE 405 P

A good combo of muscle shape, performance and carcass traits makes for a great TSI numbered bull.

|      |        |
|------|--------|
| CE   | 7.7    |
| BW   | -0.4   |
| WW   | 41     |
| YW   | 76     |
| MILK | 1      |
| MCE  | 4.5    |
| MTL  | 22     |
| SC   | 1.3    |
| TSI  | 222.48 |
| CW   | 36     |
| REA  | 0.72   |
| FAT  | 0.036  |
| MARB | 0.27   |





## R LAZY B BRANCH 203 RLB COMMISSIONER 203H

Polled  
Reg. #:M944726

BD: 04/07/20 BW: 86 WW: 752 Ratio: 100  
YW: \_\_\_\_\_ ADG: \_\_\_\_\_

LT LEDGER 0332 P  
LT COMMISSIONER 5232 PLD  
LT BALLET 9219 POLLED

LT BLUEGRASS 4017 P  
LT BRENDA 6120 PLD  
LT EASY PRO 1158 PLD  
LT BALLET 6233

KEYS MAGNUM 44U  
RLB MISS 203Z TW  
RLB MS MATTY 429 P

KEYS TEN-ACIOUS 166S  
MISS KEY FAME 111P  
RC MASTER 276 PLD TW  
RLB MS KASSIE 249M P

Nice bull from the twin sister to the last bull. Consistency at hand.

|      |        |
|------|--------|
| CE   | 4.1    |
| BW   | 0.9    |
| VW   | 39     |
| YW   | 66     |
| MILK | 1      |
| MCE  | 4.0    |
| MTL  | 20     |
| SC   | 1.4    |
| TSI  | 208.60 |
| CW   | 32     |
| REA  | 0.89   |
| FAT  | 0.030  |
| MARB | 0.14   |

## R LAZY B BRANCH 210 RLB VICTOR 210H

Polled  
Reg. #:M944755

BD: 03/22/20 BW: 90 WW: 750 Ratio: 103  
YW: \_\_\_\_\_ ADG: \_\_\_\_\_

HTA ASTROID 603D  
HTA UNDEFEATED 8115F  
HTA SARA 447B

HTA BRAVIA 855U  
HTA BRIDGET 704T  
C2 ZEPLIN 45Z  
HTA SARA 9107W

KEYS CHARLES BRONSON 189X  
RLB MISS MARIA 210Z  
RLB MS MARIA 924

KEYS CHARLES BRONSON 2U  
CARDINALS LADY D680P  
SCR SIR GRID MAKER 6032  
RLB MS UNLIMITED 301NPLD

Plenty of size with moderate birthweight. This cow does a good job always.

|      |        |
|------|--------|
| CE   | 6.8    |
| BW   | 0.2    |
| VW   | 29     |
| YW   | 60     |
| MILK | 12     |
| MCE  | 9.6    |
| MTL  | 26     |
| SC   | 0.4    |
| TSI  | 208.43 |
| CW   | 26     |
| REA  | 0.89   |
| FAT  | 0.004  |
| MARB | 0.09   |

## R LAZY B BRANCH 221 RLB SUPERIOR 221H

Polled  
Reg. #:M944765

BD: 03/21/20 BW: 98 WW: 712 Ratio: 95  
YW: \_\_\_\_\_ ADG: \_\_\_\_\_

LT JOURNEY 5208 PLD  
LT JOURNEY 7657 PLD  
LT GALA 4822 PLD

LT QUEST 2203 PLD  
LT MOLLY 3011 PLD  
LT LEDGER 0332 P  
LK MISS WIND 220

JLS PERFORMER 766W PLD  
RLB MS SUPERIOR 221Z  
RLB MS SUPER EZ 522

LT EASY BLEND 5125 PLD  
JLS NO DOUBT 766 PLD  
LT UNLIMITED EASE 9108  
RLB MS ULTIMATE 308N PLD

Typical Journey son. Long and correct, they should have sound feet and structure for years.

|      |        |
|------|--------|
| CE   | 1.9    |
| BW   | 1.2    |
| VW   | 38     |
| YW   | 68     |
| MILK | 5      |
| MCE  | 0.2    |
| MTL  | 24     |
| SC   | 1.3    |
| TSI  | 210.73 |
| CW   | 23     |
| REA  | 0.54   |
| FAT  | 0.006  |
| MARB | 0.10   |

## R LAZY B BRANCH 329 RLB MR RANSOM 329H

Polled  
Reg. #:M944768

BD: 03/19/20 BW: 90 WW: 802 Ratio: 107  
YW: \_\_\_\_\_ ADG: \_\_\_\_\_

LT JOURNEY 5208 PLD  
LT RANSOM 8644  
LT SHEILA 337 PLD

LT QUEST 2203 PLD  
LT MOLLY 3011 PLD  
LT BLUE VALUE 7903 ET  
LT MISS BREEZY 524

EC ROYALTIES 7027 PLD  
RLB WENDY 329A  
RLB MISS WIND 821U

EATONS ROYAL DYNASTY 6164  
EC CADDI 7027 PLD  
THREE TREES WIND 0383 ET  
RLB MS SABRINA 642S

He is a long bodied performance bull. Moderate birth and great numbers.

|      |        |
|------|--------|
| CE   | 4.7    |
| BW   | 0.4    |
| VW   | 38     |
| YW   | 72     |
| MILK | 15     |
| MCE  | 4.2    |
| MTL  | 34     |
| SC   | 0.9    |
| TSI  | 220.03 |
| CW   | 19     |
| REA  | 0.81   |
| FAT  | -0.013 |
| MARB | 0.13   |

## R LAZY B BRANCH 209 RLB ADVENTURE 209H

Polled  
Reg. #:M944749

BD: 03/25/20 BW: 84 WW: 754 Ratio: 100  
YW: \_\_\_\_\_ ADG: \_\_\_\_\_

LT JOURNEY 5208 PLD  
LT JOURNEY 7657 PLD  
LT GALA 4822 PLD

LT QUEST 2203 PLD  
LT MOLLY 3011 PLD  
LT LEDGER 0332 P  
LK MISS WIND 220

EC ABOUT TIME 5027 PLD  
RLB MS GLORIA 209Z  
RLB MISS LIMITLESS 601S

EC NO DOUBT 2022 P  
EC TRENDY LADY 5027 P  
RC LIMITLESS 136 PLD  
RLB MS BLAZETTE 920J PLD

Well balanced son of LT Journey typical of how they look and grow.

|      |        |
|------|--------|
| CE   | 7.5    |
| BW   | -0.7   |
| VW   | 38     |
| YW   | 74     |
| MILK | 7      |
| MCE  | 6.2    |
| MTL  | 26     |
| SC   | 1.2    |
| TSI  | 217.38 |
| CW   | 25     |
| REA  | 0.60   |
| FAT  | 0.029  |
| MARB | 0.06   |

## R LAZY B BRANCH 212AH RLB MR 212AH TW

Polled  
Reg. #:M944745

BD: 03/27/20 BW: 84 WW: 688 Ratio: 100  
YW: \_\_\_\_\_ ADG: \_\_\_\_\_

LT LEDGER 0332 P  
LT COMMISSIONER 5232 PLD  
LT BALLET 9219 POLLED

LT BLUEGRASS 4017 P  
LT BRENDA 6120 PLD  
LT EASY PRO 1158 PLD  
LT BALLET 6233

RAILE 2250 U054  
RLB MISS MAKO 212Z  
RLB MISS MAKO 056

FINKS 2250 OF 3575D040ET  
RC NICHOLE 0023  
SCR SIR GRID MAKER 6032  
RLB MS LIMITLESS 512

A twin raised on the cow with both calves and doing well.

|      |        |
|------|--------|
| CE   | 0.9    |
| BW   | 2.5    |
| VW   | 36     |
| YW   | 65     |
| MILK | 5      |
| MCE  | -0.2   |
| MTL  | 23     |
| SC   | 0.9    |
| TSI  | 210.11 |
| CW   | 26     |
| REA  | 0.65   |
| FAT  | 0.025  |
| MARB | 0.26   |

## R LAZY B BRANCH 320 RLB REWARD 320H

Polled  
Reg. #:M944775

BD: 03/16/20 BW: 104 WW: 721 Ratio: 96  
YW: \_\_\_\_\_ ADG: \_\_\_\_\_

LT JOURNEY 5208 PLD  
LT RANSOM 8644  
LT SHEILA 337 PLD

LT QUEST 2203 PLD  
LT MOLLY 3011 PLD  
LT BLUE VALUE 7903 ET  
LT MISS BREEZY 524

JLS PERFORMER 766W PLD  
RLB REWARDING 320A  
RLB MISS REWARD 749T

LT EASY BLEND 5125 PLD  
JLS NO DOUBT 766 PLD  
RC REWARD 5150  
RLB MS UNLIMITED 301NPLD

A good, thick butted, wide topped Ransom. The 320 cow always does it right and will show up as a granddam to multiple bulls in the catalog.

|      |        |
|------|--------|
| CE   | -1.9   |
| BW   | 2.8    |
| VW   | 41     |
| YW   | 80     |
| MILK | 12     |
| MCE  | -2.6   |
| MTL  | 32     |
| SC   | 1.1    |
| TSI  | 223.67 |
| CW   | 25     |
| REA  | 0.55   |
| FAT  | -0.011 |
| MARB | 0.14   |





R LAZY B RANCH  
339

## RLB MR COMMISSIONER 339H

Polled  
Reg. #:M944738

BD: 03/30/20 BW: 98 WW: 852 Ratio: 113  
YW: \_\_\_\_\_ ADG: \_\_\_\_\_

LT LEDGER 0332 P  
LT COMMISSIONER 5232 PLD  
LT BALLET 9219 POLLED

RBM FARGO Y111  
RLB MS MARIA 339A  
RLB MS MARIA 924

LT BLUEGRASS 4017 P  
LT BRENDA 6120 PLD  
LT EASY PRO 1158 PLD  
LT BALLET 6233

SPARROWS FARGO 811U  
HC RHINESTONE 5100  
SCR SIR GRID MAKER 6032  
RLB MS UNLIMITED 301NPLD

High volume performance bull. He can pack away feed and turn it into beef. His mother is a solid Fargo daughter who does this every year.

|      |        |
|------|--------|
| CE   | 3.2    |
| BW   | 2.0    |
| WW   | 48     |
| YW   | 84     |
| MILK | 6      |
| MCE  | 1.1    |
| MTL  | 30     |
| SC   | 1.1    |
| TSI  | 224.84 |
| CW   | 34     |
| REA  | 0.79   |
| FAT  | 0.040  |
| MARB | 0.17   |



R LAZY B RANCH  
341

## RLB BOARDWALK 341H

Polled  
Reg. #:M944747

BD: 03/27/20 BW: 90 WW: 762 Ratio: 101  
YW: \_\_\_\_\_ ADG: \_\_\_\_\_

LT LEDGER 0332 P  
LT COMMISSIONER 5232 PLD  
LT BALLET 9219 POLLED

KEYS CHARLES BRONSON 189X  
RLB MISS TOOTIE 341A  
RLB MISS TOOTIE 139Y PLD

LT BLUEGRASS 4017 P  
LT BRENDA 6120 PLD  
LT EASY PRO 1158 PLD  
LT BALLET 6233

KEYS CHARLES BRONSON 2U  
CARDINALS LADY D680P  
RC MCCOY 2177 PLD  
RLB MS TOOTIE 750T

Another Commissioner that is deep flanked and smooth fronted.

|      |        |
|------|--------|
| CE   | 7.2    |
| BW   | 0.0    |
| WW   | 37     |
| YW   | 69     |
| MILK | 1      |
| MCE  | 4.8    |
| MTL  | 20     |
| SC   | 1.0    |
| TSI  | 215.83 |
| CW   | 29     |
| REA  | 0.80   |
| FAT  | 0.011  |
| MARB | 0.16   |

YEARLING BULLS



Nina and Wesley's wedding



Katelyn and Joe's wedding.

# Blueprint®



Tyler Melroe, M.S.  
605-237-8431

Blueprint mineral program is formulated to meet the higher nutrient needs of today's cattle. This program promotes rapid growth, maximum reproductive performance and animal health. The Blueprint Seedstock Grower supplement used by R Lazy B Ranch, in addition to the benefits of the Blueprint program, is also formulated to optimize hoof health and foot quality in these growing cattle.



R LAZY B RANCH  
347

## RLB JOURNEY 347H

Polled  
Reg. #:M944732

BD: 04/02/20 BW: 88 WW: 723 Ratio: 96  
YW: \_\_\_\_\_ ADG: \_\_\_\_\_

LT JOURNEY 5208 PLD  
LT JOURNEY 7657 PLD  
LT GALA 4822 PLD

LT QUEST 2203 PLD  
LT MOLLY 3011 PLD  
LT LEDGER 0332 P  
LK MISS WIND 220

RBM FARGO Y111  
RLB MISS FAMOUS 347A  
RLB MISS MAKO 056

SPARROWS FARGO 811U  
HC RHINESTONE 5100  
SCR SIR GRID MAKER 6032  
RLB MS LIMITLESS 512

Great looking Journey. Sound and big middled.

|      |        |
|------|--------|
| CE   | 5.9    |
| BW   | -0.2   |
| VW   | 40     |
| YW   | 81     |
| MILK | 10     |
| MCE  | 4.0    |
| MTL  | 30     |
| SC   | 1.3    |
| TSI  | 226.28 |
| CW   | 29     |
| REA  | 0.74   |
| FAT  | 0.018  |
| MARB | 0.11   |



R LAZY B RANCH  
364

## RLB CONTENDER 364H

Polled  
Reg. #:M944767

BD: 03/19/20 BW: 102 WW: 790 Ratio: 105  
YW: \_\_\_\_\_ ADG: \_\_\_\_\_

HTA ASTROID 603D  
HTA UNDEFEATED 8115F  
HTA SARA 447B

HTA BRAVIA 855U  
HTA BRIDGET 704T  
C2 ZEPLIN 45Z  
HTA SARA 9107W

EC ABOUT TIME 5027 PLD  
RLB MISS SPURT 364A  
RLB SPURT 706T

EC NO DOUBT 2022 P  
EC TRENDY LADY 5027 P  
LT WESTERN SPUR 2061 PLD  
RLB MS CONSTANCE 521

He is a long, stretchy bull made for a black cow.

|      |        |
|------|--------|
| CE   | -0.6   |
| BW   | 3.2    |
| VW   | 42     |
| YW   | 72     |
| MILK | 6      |
| MCE  | 5.7    |
| MTL  | 27     |
| SC   | 1.1    |
| TSI  | 210.28 |
| CW   | 26     |
| REA  | 0.85   |
| FAT  | 0.007  |
| MARB | 0.03   |



R LAZY B RANCH  
352

## RLB TIME TRAVELER 352H

Polled  
Reg. #:M944716

BD: 04/19/20 BW: 94 WW: 760 Ratio: 104  
YW: \_\_\_\_\_ ADG: \_\_\_\_\_

LT JOURNEY 5208 PLD  
LT JOURNEY 7657 PLD  
LT GALA 4822 PLD

LT QUEST 2203 PLD  
LT MOLLY 3011 PLD  
LT LEDGER 0332 P  
LK MISS WIND 220

EC ABOUT TIME 5027 PLD  
RLB MS TINA MARIE 352A  
RLB MISS TINA 752T

EC NO DOUBT 2022 P  
EC TRENDY LADY 5027 P  
RC MCCOY 2177 PLD  
KCC MISS UNLIMITED 582E

Sharp looking outfit.

|      |        |
|------|--------|
| CE   | 2.5    |
| BW   | 1.4    |
| VW   | 42     |
| YW   | 78     |
| MILK | 10     |
| MCE  | 2.6    |
| MTL  | 30     |
| SC   | 1.3    |
| TSI  | 219.43 |
| CW   | 23     |
| REA  | 0.64   |
| FAT  | 0.015  |
| MARB | 0.08   |

R LAZY B RANCH  
356

## RLB WOODY 356H

Polled  
Reg. #:M944731

BD: 04/03/20 BW: 96 WW: 804 Ratio: 107  
YW: \_\_\_\_\_ ADG: \_\_\_\_\_

HTA ASTROID 603D  
HTA UNDEFEATED 8115F  
HTA SARA 447B

HTA BRAVIA 855U  
HTA BRIDGET 704T  
C2 ZEPLIN 45Z  
HTA SARA 9107W

RBM FARGO Y111  
RLB MISS ANGEL 356A  
RLB MS ANGELICA 041

SPARROWS FARGO 811U  
HC RHINESTONE 5100  
SCR SIR GRID MAKER 6032  
RLB ANGELICA 507

This bull shows muscle and bone and performance.

|      |        |
|------|--------|
| CE   | 3.8    |
| BW   | 1.9    |
| VW   | 40     |
| YW   | 78     |
| MILK | 13     |
| MCE  | 7.7    |
| MTL  | 33     |
| SC   | 0.9    |
| TSI  | 221.38 |
| CW   | 35     |
| REA  | 0.96   |
| FAT  | 0.012  |
| MARB | 0.06   |



Deep Roots, Dedication & Drive



Contact Dustin Puhmann for all your feed needs:  
712-229-2258 dpuhmann@coopfe.com

WWW.COOPFE.COM

AGRONOMY ENERGY FEED GRAIN LUMBER

YEARLING BULLS





**R LAZY B RANCH 415 RLB MR COMMISSIONER 415H** Polled  
Reg. #M944725

|                          |                       |                   |                  |             |        |
|--------------------------|-----------------------|-------------------|------------------|-------------|--------|
| <b>BD:</b> 04/08/20      | <b>BW:</b> 80         | <b>WW:</b> 734    | <b>Ratio:</b> 98 | <b>CE</b>   | 9.6    |
|                          | <b>YW:</b> _____      | <b>ADG:</b> _____ |                  | <b>BW</b>   | -1.6   |
|                          |                       |                   |                  | <b>VW</b>   | 35     |
|                          |                       |                   |                  | <b>YW</b>   | 62     |
| LT LEDGER 0332 P         | LT BLUEGRASS 4017 P   |                   |                  | <b>MILK</b> | -1     |
| LT COMMISSIONER 5232 PLD | LT BRENDA 6120 PLD    |                   |                  | <b>MCE</b>  | 4.9    |
| LT BALLET 9219 POLLED    | LT EASY PRO 1158 PLD  |                   |                  | <b>MTL</b>  | 17     |
|                          | LT BALLET 6233        |                   |                  | <b>SC</b>   | 1.0    |
|                          | EC NO DOUBT 2022 P    |                   |                  | <b>TSI</b>  | 206.07 |
| EC ABOUT TIME 5027 PLD   | EC TRENDY LADY 5027 P |                   |                  | <b>CW</b>   | 27     |
| RLB ALL ABOUT 415B P     | RC LIMITLESS 136 PLD  |                   |                  | <b>REA</b>  | 0.62   |
| RLB MS LIMITLESS 504     | RLB MS MAGIC 030K PLD |                   |                  | <b>FAT</b>  | 0.038  |
|                          |                       |                   |                  | <b>MARB</b> | 0.12   |

Sharp looker. A bunch of the Commissioner bulls could be put together and sire an impressive set of feeder cattle.

**R LAZY B RANCH 422 RLB WOODROW 422H** Polled  
Reg. #M944722

|                          |                          |                   |                   |             |        |
|--------------------------|--------------------------|-------------------|-------------------|-------------|--------|
| <b>BD:</b> 04/11/20      | <b>BW:</b> 90            | <b>WW:</b> 729    | <b>Ratio:</b> 100 | <b>CE</b>   | 7.0    |
|                          | <b>YW:</b> _____         | <b>ADG:</b> _____ |                   | <b>BW</b>   | 0.3    |
|                          |                          |                   |                   | <b>VW</b>   | 39     |
|                          |                          |                   |                   | <b>YW</b>   | 69     |
| LT LEDGER 0332 P         | LT BLUEGRASS 4017 P      |                   |                   | <b>MILK</b> | 5      |
| LT COMMISSIONER 5232 PLD | LT BRENDA 6120 PLD       |                   |                   | <b>MCE</b>  | 4.4    |
| LT BALLET 9219 POLLED    | LT EASY PRO 1158 PLD     |                   |                   | <b>MTL</b>  | 24     |
|                          | LT BALLET 6233           |                   |                   | <b>SC</b>   | 1.2    |
|                          | SPARROWS FARGO 811U      |                   |                   | <b>TSI</b>  | 211.56 |
| RBM FARGO Y111           | HC RHINESTONE 5100       |                   |                   | <b>CW</b>   | 32     |
| RLB MS WEST WIND 422B P  | THREE TREES WIND 0383 ET |                   |                   | <b>REA</b>  | 0.77   |
| RLB MISS KEY WIND 906    | RLB MISS KEY 751T        |                   |                   | <b>FAT</b>  | 0.030  |
|                          |                          |                   |                   | <b>MARB</b> | 0.14   |

Same with this Commissioner son. Well balanced growth and carcass.



**R LAZY B RANCH 406 RLB TRAVELER 406H** Polled  
Reg. #M944711

|                       |                          |                   |                   |             |        |
|-----------------------|--------------------------|-------------------|-------------------|-------------|--------|
| <b>BD:</b> 05/04/20   | <b>BW:</b> 86            | <b>WW:</b> 851    | <b>Ratio:</b> 113 | <b>CE</b>   | 4.1    |
|                       | <b>YW:</b> _____         | <b>ADG:</b> _____ |                   | <b>BW</b>   | 1.1    |
|                       |                          |                   |                   | <b>VW</b>   | 51     |
|                       |                          |                   |                   | <b>YW</b>   | 91     |
| LT JOURNEY 5208 PLD   | LT QUEST 2203 PLD        |                   |                   | <b>MILK</b> | 8      |
| LT JOURNEY 7657 PLD   | LT MOLLY 3011 PLD        |                   |                   | <b>MCE</b>  | 4.5    |
| LT GALA 4822 PLD      | LT LEDGER 0332 P         |                   |                   | <b>MTL</b>  | 33     |
|                       | LK MISS WIND 220         |                   |                   | <b>SC</b>   | 1.7    |
|                       | LT BLUEGRASS 4017 P      |                   |                   | <b>TSI</b>  | 236.03 |
| LT BLUE VALUE 7903 ET | LT UNLIMITED MAID 7184 P |                   |                   | <b>CW</b>   | 27     |
| RLB MISS BELLE 406B P | KEYS MAGNUM 44U          |                   |                   | <b>REA</b>  | 0.80   |
| RLB MS CONNIE 245Z    | RLB MS CONVERSE 514      |                   |                   | <b>FAT</b>  | 0.006  |
|                       |                          |                   |                   | <b>MARB</b> | 0.22   |

This is a May bull that really has it going on. Extra length, good top and gaining well in the feedlot. He deserves a look. High EPD and high carcass value.



**R LAZY B RANCH 425 RLB UNDEFEATED 425H** Polled  
Reg. #M944742

|                          |                           |                   |                  |             |        |
|--------------------------|---------------------------|-------------------|------------------|-------------|--------|
| <b>BD:</b> 03/30/20      | <b>BW:</b> 96             | <b>WW:</b> 729    | <b>Ratio:</b> 97 | <b>CE</b>   | 4.7    |
|                          | <b>YW:</b> _____          | <b>ADG:</b> _____ |                  | <b>BW</b>   | 0.9    |
|                          |                           |                   |                  | <b>VW</b>   | 33     |
|                          |                           |                   |                  | <b>YW</b>   | 63     |
| HTA ASTROID 603D         | HTA BRAVIA 855U           |                   |                  | <b>MILK</b> | 10     |
| HTA UNDEFEATED 8115F     | HTA BRIDGET 704T          |                   |                  | <b>MCE</b>  | 5.0    |
| HTA SARA 447B            | C2 ZEPLIN 45Z             |                   |                  | <b>MTL</b>  | 26     |
|                          | HTA SARA 9107W            |                   |                  | <b>SC</b>   | 0.6    |
|                          | EC NO DOUBT 2022 P        |                   |                  | <b>TSI</b>  | 210.05 |
| RBM NO DOUBT Z34         | RBM BLEND 829             |                   |                  | <b>CW</b>   | 24     |
| RLB MS GRETTA 425B P     | LT LONG DISTANCE 9001 PLD |                   |                  | <b>REA</b>  | 0.79   |
| RLB MISS GRETTA 104Y PLD | RLB MISS GRETTA 937       |                   |                  | <b>FAT</b>  | 0.014  |
|                          |                           |                   |                  | <b>MARB</b> | 0.14   |

A great looking Undeclared. They have a consistent pattern as well.

**R LAZY B RANCH 449 RLB MR BUILT-MOR 449H** Polled  
Reg. #M944753

|                       |                        |                   |                   |             |        |
|-----------------------|------------------------|-------------------|-------------------|-------------|--------|
| <b>BD:</b> 03/23/20   | <b>BW:</b> 84          | <b>WW:</b> 751    | <b>Ratio:</b> 100 | <b>CE</b>   | 6.8    |
|                       | <b>YW:</b> _____       | <b>ADG:</b> _____ |                   | <b>BW</b>   | -0.6   |
|                       |                        |                   |                   | <b>VW</b>   | 33     |
|                       |                        |                   |                   | <b>YW</b>   | 70     |
| LT JOURNEY 5208 PLD   | LT QUEST 2203 PLD      |                   |                   | <b>MILK</b> | 19     |
| LT RANSOM 8644        | LT MOLLY 3011 PLD      |                   |                   | <b>MCE</b>  | 3.8    |
| LT SHEILA 337 PLD     | LT BLUE VALUE 7903 ET  |                   |                   | <b>MTL</b>  | 36     |
|                       | LT MISS BREEZY 524     |                   |                   | <b>SC</b>   | 0.9    |
|                       | SPARROWS FARGO 811U    |                   |                   | <b>TSI</b>  | 217.67 |
| RBM FARGO Y111        | HC RHINESTONE 5100     |                   |                   | <b>CW</b>   | 28     |
| RLB MISS SNOWY 449B P | RC LIMITLESS 136 PLD   |                   |                   | <b>REA</b>  | 0.70   |
| RLB MS SNOWY 626S TW  | RLB MS HAYMAKER 228M P |                   |                   | <b>FAT</b>  | 0.001  |
|                       |                        |                   |                   | <b>MARB</b> | 0.11   |

Long, big bodied bull. Wide top and smooth fronted.

R LAZY B RANCH  
4520

## KS TIOGA BUCKLE

Polled  
Reg. #:M944287

BD: 04/05/20 BW: 80 WW: 826 Ratio: 111  
YW: \_\_\_\_\_ ADG: \_\_\_\_\_

BHC TOP PRO 7025 P  
LT TIOGA 4090 PLD  
LT BRENDA 8034 PLD  
LT EASY PRO 1158 PLD  
BHC MS WATCHMAN 2053 P  
LT SILVER DISTANCE 5342P  
LT BRENDA 6120 PLD  
LT PATRIOT 4004 PLD  
KS BUCKLE BUNNY  
RLB MISS PEACHES 488B  
LT LEDGER 0332 P  
LK MISS RIO 2119  
RBM FARGO Y111  
RLB MS PEACHES 117Y PLD

Clean front that flows into a smooth shoulder, deep flank and full hind quarter. He is consigned by my neighbor Kacy Smith and was shown in 4H at the County Fair.

|      |        |
|------|--------|
| CE   | 3.0    |
| BW   | 0.0    |
| VW   | 38     |
| YW   | 71     |
| MILK | 18     |
| MCE  | 2.5    |
| MTL  | 37     |
| SC   | 0.7    |
| TSI  | 215.89 |
| CW   | 22     |
| REA  | 0.66   |
| FAT  | 0.027  |
| MARB | 0.14   |



R LAZY B RANCH  
464

## RLB HARVESTOR 464H

Polled  
Reg. #:M944733

BD: 04/11/20 BW: 92 WW: 848 Ratio: 112  
YW: \_\_\_\_\_ ADG: \_\_\_\_\_

LT LEDGER 0332 P  
LT COMMISSIONER 5232 PLD  
LT BALLET 9219 POLLED  
LT BLUEGRASS 4017 P  
LT BRENDA 6120 PLD  
LT EASY PRO 1158 PLD  
LT BALLET 6233  
RBM FARGO Y111  
RLB MS SWEETY 464B P  
RLB SWEETY 616S  
SPARROWS FARGO 811U  
HC RHINESTONE 5100  
RC LIMITLESS 136 PLD  
RLB DIVIDEND 136L PLD

A big bodied bull with loads of growth and carcass quality.

|      |        |
|------|--------|
| CE   | 5.7    |
| BW   | 1.2    |
| VW   | 48     |
| YW   | 86     |
| MILK | 0      |
| MCE  | 4.2    |
| MTL  | 24     |
| SC   | 1.1    |
| TSI  | 225.89 |
| CW   | 35     |
| REA  | 0.71   |
| FAT  | 0.034  |
| MARB | 0.14   |



R LAZY B RANCH  
472

## RLB COMMISSIONER 472H

Polled  
Reg. #:M944721

BD: 04/12/20 BW: 88 WW: 752 Ratio: 100  
YW: \_\_\_\_\_ ADG: \_\_\_\_\_

LT LEDGER 0332 P  
LT COMMISSIONER 5232 PLD  
LT BALLET 9219 POLLED  
LT BLUEGRASS 4017 P  
LT BRENDA 6120 PLD  
LT EASY PRO 1158 PLD  
LT BALLET 6233  
EC NO DOUBT 2022 P  
EC TRENDY LADY 5027 P  
RC LIMITLESS 136 PLD  
RLB MS ANGIE 912J PLD  
C ABOUT TIME 5027 PLD  
RLB MS SHEBA 472B P  
RLB MS SHEBA 627S

Young April bull that will grow up and be somebody. Fits with the other Commissioners.

|      |        |
|------|--------|
| CE   | 6.9    |
| BW   | -0.1   |
| VW   | 40     |
| YW   | 70     |
| MILK | 2      |
| MCE  | 3.7    |
| MTL  | 22     |
| SC   | 1.1    |
| TSI  | 212.16 |
| CW   | 33     |
| REA  | 0.71   |
| FAT  | 0.029  |
| MARB | 0.14   |

R LAZY B RANCH  
477

## RLB REWARD 477H

Polled  
Reg. #:M944712

BD: 05/04/20 BW: 88 WW: 843 Ratio: 112  
YW: \_\_\_\_\_ ADG: \_\_\_\_\_

LT RUSHMORE 8060 PLD  
LT RUSHMORE 7529 PLD  
LT PETRA 5565 PLD  
LT RIO BRAVO 3181 P  
LT BRENDA'S EASE 3055PLD  
LT BLUEGRASS 3417 PLD  
LT PETRA 306 PLD  
EATONS VISIONARY 2044 P  
WCR MS PRINCE 071 P  
SCR SIR GRID MAKER 6032  
RLB MS SYBIL 651S  
WCR HEAVY DUTY 237 P  
RLB MS SYBIL 477B P  
RLB MS SYBIL 118Y PLD

A May bull that is awesome. Deep ribbed, smooth fronted, great feedlot performance.

|      |        |
|------|--------|
| CE   | 2.3    |
| BW   | 2.1    |
| VW   | 46     |
| YW   | 84     |
| MILK | 11     |
| MCE  | 1.0    |
| MTL  | 34     |
| SC   |        |
| TSI  | 225.58 |
| CW   | 33     |
| REA  | 0.67   |
| FAT  | 0.013  |
| MARB | 0.18   |



*See you at the Sale!*

# Friday, February 21, 2021

1:00 PM • Hub City Livestock, Aberdeen, SD

YEARLING BULLS





**R LAZY B RANCH**  
**489 RLB MR RIBEYE 489H**

Polled  
Reg. #:M944752

**BD:** 03/24/20 **BW:** 94 **WW:** 785 **Ratio:** 104  
**YW:** \_\_\_\_\_ **ADG:** \_\_\_\_\_

HTA ASTROID 603D  
HTA UNDEFEATED 8115F  
HTA SARA 447B

RBM FARGO Y111  
RLB MISS 489B  
RLB MISS ULTRA 826U

HTA BRAVIA 855U  
HTA BRIDGET 704T  
C2 ZEPLIN 45Z  
HTA SARA 9107W

SPARROWS FARGO 811U  
HC RHINESTONE 5100  
KC UNLIMITED MAC 552P ET  
RLB MS SONYA 644S PLD

|      |        |
|------|--------|
| CE   | 3.8    |
| BW   | 1.7    |
| WW   | 38     |
| YW   | 73     |
| MILK | 9      |
| MCE  | 6.4    |
| MTL  | 28     |
| SC   | 0.8    |
| TSI  | 215.08 |
| CW   | 29     |
| REA  | 0.81   |
| FAT  | 0.009  |
| MARB | 0.01   |

I've liked this one since he was a calf. Look at the hind leg and guts. Made for feed conversion and carcass quality.

**R LAZY B RANCH**  
**507 RLB EPIC 507H**

Polled  
Reg. #:M944761

**BD:** 03/23/20 **BW:** 88 **WW:** 726 **Ratio:** 106  
**YW:** \_\_\_\_\_ **ADG:** \_\_\_\_\_

LT JOURNEY 5208 PLD  
LT JOURNEY 7657 PLD  
LT GALA 4822 PLD

LT LEDGER 0332 P  
RLB MISS FAMOUS 507C PLD  
RLB MISS FAMOUS 347A

LT QUEST 2203 PLD  
LT MOLLY 3011 PLD  
LT LEDGER 0332 P  
LK MISS WIND 220

LT BLUEGRASS 4017 P  
LT BRENDA 6120 PLD  
RBM FARGO Y111  
RLB MISS MAKO 056

Fancy fronted and deep rear quarter. Low birth weight and high performance.

|      |        |
|------|--------|
| CE   | 6.6    |
| BW   | -0.5   |
| WW   | 42     |
| YW   | 82     |
| MILK | 7      |
| MCE  | 4.6    |
| MTL  | 28     |
| SC   | 1.5    |
| TSI  | 227.36 |
| CW   | 27     |
| REA  | 0.72   |
| FAT  | 0.036  |
| MARB | 0.16   |



YEARLING BULLS

# CHARadvantage

An IMI Global Age, Source & Genetic Verification Program for  
Charolais - influenced Feeder Cattle.

**CharAdvantage Provides Added Value Through:**

- Age & Source Verification • NHTC, VNB and BeefCARE Certification
- Genetic Benchmarking through registered Sires or Dams
- Documentation of health protocols & BQA certification
- Exposure of Charolais influenced genetics to a large list of potential buyers



**For more information, contact:**  
American-International Charolais Association  
Colt Keffer, Director of Industry Relations & Sales  
(765) 376-8784 • ckeffer@charolaisusa.com



R LAZY B RANCH  
511

## RLB VACATION 511H

Polled  
Reg. #M944772

BD: 03/17/20 BW: 90 WW: 807 Ratio: 110  
YW: \_\_\_\_\_ ADG: \_\_\_\_\_

LT JOURNEY 5208 PLD  
LT JOURNEY 7657 PLD  
LT GALA 4822 PLD  
LT BLUE RAY 3316 TW PLD  
RLB MS BLUE BELL 511C PLD  
RLB MS MASTERS 310A  
LT QUEST 2203 PLD  
LT MOLLY 3011 PLD  
LT LEDGER 0332 P  
LK MISS WIND 220  
LT BLUE VALUE 7903 ET  
LT BELLE 7026 P  
LT LEDGER 0332 P  
RLB MS MASTER 132Y TW

Extra length and stretch to go with top weaning and yearling performance. Buy with confidence. 238 TSI

|      |        |
|------|--------|
| CE   | 3.7    |
| BW   | 1.6    |
| WW   | 54     |
| YW   | 98     |
| MILK | 5      |
| MCE  | 5.0    |
| MTL  | 32     |
| SC   | 1.7    |
| TSI  | 238.90 |
| CW   | 25     |
| REA  | 0.69   |
| FAT  | 0.027  |
| MARB | 0.16   |



R LAZY B RANCH  
521H

## RLB REWARDING 521H

Polled  
Reg. #M944754

BD: 03/23/20 BW: 90 WW: 697 Ratio: 95  
YW: \_\_\_\_\_ ADG: \_\_\_\_\_

SPARROWS FARGO 811U  
RBM FARGO Y111  
HC RHINESTONE 5100  
LT LEDGER 0332 P  
RLB MS REWARD 521C  
RLB REWARDING 320A  
WINN MANS LANZA 610S  
SPARROWS DELIGHT 74L  
LT EASY PRO 1158 PLD  
HC JACK 2082  
LT BLUEGRASS 4017 P  
LT BRENDA 6120 PLD  
JLS PERFORMER 766W PLD  
RLB MISS REWARD 749T

A Fargo with size and a wide top.

|      |        |
|------|--------|
| CE   | 7.0    |
| BW   | 0.4    |
| WW   | 46     |
| YW   | 94     |
| MILK | 7      |
| MCE  | 5.2    |
| MTL  | 30     |
| SC   | 1.5    |
| TSI  | 234.24 |
| CW   | 42     |
| REA  | 0.84   |
| FAT  | 0.035  |
| MARB | 0.00   |

R LAZY B RANCH  
549

## RLB MR MAJSETIC 549H

Polled  
Reg. #M944736

BD: 03/31/20 BW: 92 WW: 702 Ratio: 96  
YW: \_\_\_\_\_ ADG: \_\_\_\_\_

HTA ASTROID 603D  
HTA UNDEFEATED 8115F  
HTA SARA 447B  
EC ABOUT TIME 5027 PLD  
RLB MS TOOTIE 549C PLD  
RLB MS TOOTIE 750T  
HTA BRAVIA 855U  
HTA BRIDGET 704T  
C2 ZEPLIN 45Z  
HTA SARA 9107W  
EC NO DOUBT 2022 P  
EC TRENDY LADY 5027 P  
KC UNLIMITED MAC 552P ET  
RLB MS DRESSUP 551

You'll agree this bull has a majestic look. His mother crossed well with the HTA bull.

|      |        |
|------|--------|
| CE   | 5.1    |
| BW   | 0.9    |
| WW   | 36     |
| YW   | 68     |
| MILK | 5      |
| MCE  | 7.2    |
| MTL  | 23     |
| SC   | 0.8    |
| TSI  | 210.55 |
| CW   | 26     |
| REA  | 0.79   |
| FAT  | 0.010  |
| MARB | 0.00   |



R LAZY B RANCH  
516

## RLB FEEDRITE 516H

Polled  
Reg. #M944786

BD: 03/11/20 BW: 84 WW: 726 Ratio: 99  
YW: \_\_\_\_\_ ADG: \_\_\_\_\_

HTA ASTROID 603D  
HTA UNDEFEATED 8115F  
HTA SARA 447B  
HTA BRAVIA 855U  
HTA BRIDGET 704T  
C2 ZEPLIN 45Z  
HTA SARA 9107W  
LT BLUEGRASS 4017 P  
LT BRENDA 6120 PLD  
EC ABOUT TIME 5027 PLD  
RLB MS BREEZY 509  
LT LEDGER 0332 P  
RLB BREEZY 516C PLD  
RLB BREEZY 331A

A great choice for any application. Very well muscled and one of my favorites.

|      |        |
|------|--------|
| CE   | 6.8    |
| BW   | 0.1    |
| WW   | 36     |
| YW   | 73     |
| MILK | 5      |
| MCE  | 7.9    |
| MTL  | 23     |
| SC   | 1.0    |
| TSI  | 218.33 |
| CW   | 29     |
| REA  | 0.83   |
| FAT  | 0.031  |
| MARB | 0.09   |

R LAZY B RANCH  
523

## RLB MR FARGO 523H

Polled  
Reg. #M944766

BD: 03/21/20 BW: 100 WW: 841 Ratio: 111  
YW: \_\_\_\_\_ ADG: \_\_\_\_\_

SPARROWS FARGO 811U  
RBM FARGO Y111  
HC RHINESTONE 5100  
WINN MANS LANZA 610S  
SPARROWS DELIGHT 74L  
LT EASY PRO 1158 PLD  
HC JACK 2082  
EC MAJOR IMPACT 107 PLD  
RLB MISS SUPERIOR 523C PLD  
RLB MS SUPERIOR 221Z  
EC SILVER DISTANCE 740 PLD  
EC DYNASTY 107 PLD  
JLS PERFORMER 766W PLD  
RLB MS SUPER EZ 522

Deep rib and flank to go with a great hind leg. Gotta like him! High weaning index.

|      |        |
|------|--------|
| CE   | 2.5    |
| BW   | 2.5    |
| WW   | 49     |
| YW   | 88     |
| MILK | 12     |
| MCE  | 5.3    |
| MTL  | 36     |
| SC   | 1.2    |
| TSI  | 223.65 |
| CW   | 33     |
| REA  | 0.81   |
| FAT  | 0.009  |
| MARB | -0.08  |



YEARLING BULLS



R LAZY B RANCH  
552

## RLB MR COMPLETE 552H

Polled  
Reg. #:M944724

BD: 04/09/20 BW: 84 WW: 741 Ratio: 101  
YW: \_\_\_\_\_ ADG: \_\_\_\_\_

LT LEDGER 0332 P  
LT COMMISSIONER 5232 PLD  
LT BALLET 9219 POLLED

LT BLUEGRASS 4017 P  
LT BRENDA 6120 PLD  
LT EASY PRO 1158 PLD  
LT BALLET 6233

EC ABOUT TIME 5027 PLD  
RLB MISS DEMARA 552C PLD  
RLB MISS DEMARA 972

EC NO DOUBT 2022 P  
EC TRENDY LADY 5027 P  
SCR SIR GRID MAKER 6032  
MISS KEY DAMERA 292P

Another consistent Commissioner. Performance, marbling and growth.

|      |        |
|------|--------|
| CE   | 6.8    |
| BW   | 0.0    |
| WW   | 44     |
| YW   | 73     |
| MILK | 1      |
| MCE  | 3.3    |
| MTL  | 23     |
| SC   | 1.1    |
| TSI  | 215.33 |
| CW   | 32     |
| REA  | 0.79   |
| FAT  | 0.027  |
| MARB | 0.15   |



R LAZY B RANCH  
609

## RLB CHAMPION 609H

Polled  
Reg. #:M944763

BD: 03/22/20 BW: 88 WW: 759 Ratio: 101  
YW: \_\_\_\_\_ ADG: \_\_\_\_\_

HTA ASTROID 603D  
HTA UNDEFEATED 8115F  
HTA SARA 447B

HTA BRAVIA 855U  
HTA BRIDGET 704T  
C2 ZEPLIN 45Z  
HTA SARA 9107W

LT BLUE RAY 3316 TW PLD  
RLB MISS BLUE WEST 609D  
RLB MS WEST WIND 422B P

LT BLUE VALUE 7903 ET  
LT BELLE 7026 P  
RBM FARGO Y111  
RLB MISS KEY WIND 906

Pretty nice bull here. So well balanced and great muscle shape.

|      |        |
|------|--------|
| CE   | 6.5    |
| BW   | 0.7    |
| WW   | 34     |
| YW   | 60     |
| MILK | 11     |
| MCE  | 8.9    |
| MTL  | 28     |
| SC   | 0.9    |
| TSI  | 204.07 |
| CW   | 25     |
| REA  | 0.84   |
| FAT  | 0.013  |
| MARB | 0.09   |



R LAZY B RANCH  
610

## RLB LIBERTY 610H

Polled  
Reg. #:M944757

BD: 03/21/20 BW: 90 WW: 745 Ratio: 99  
YW: \_\_\_\_\_ ADG: \_\_\_\_\_

LT JOURNEY 5208 PLD  
LT RANSOM 8644  
LT SHEILA 337 PLD

LT QUEST 2203 PLD  
LT MOLLY 3011 PLD  
LT BLUE VALUE 7903 ET  
LT MISS BREEZY 524

LT LEDGER 0332 P  
RLB MISS SHEBA 610D  
RLB MS SHEBA 472B P

LT BLUEGRASS 4017 P  
LT BRENDA 6120 PLD  
EC ABOUT TIME 5027 PLD  
RLB MS SHEBA 627S

One of the best Ransom bulls. Hard to pass him by. He should work on any type of cow.

|      |        |
|------|--------|
| CE   | 4.7    |
| BW   | 0.02   |
| WW   | 35     |
| YW   | 68     |
| MILK | 13     |
| MCE  | 3.7    |
| MTL  | 30     |
| SC   | 1.1    |
| TSI  | 214.72 |
| CW   | 22     |
| REA  | 0.68   |
| FAT  | 0.012  |
| MARB | 0.17   |



R LAZY B RANCH  
612

## RLB ULTRA 612H

Polled  
Reg. #:M944782

BD: 03/12/20 BW: 92 WW: 725 Ratio: 96  
YW: \_\_\_\_\_ ADG: \_\_\_\_\_

SPARROWS FARGO 811U  
RBM FARGO Y111  
HC RHINESTONE 5100

WINN MANS LANZA 610S  
SPARROWS DELIGHT 74L  
LT EASY PRO 1158 PLD  
HC JACK 2082

LT PATRIOT 4004 PLD  
RLB MISS ULTRA 612D  
RLB MISS ULTRA 217Z

LT LEDGER 0332 P  
LK MISS RIO 2119  
JLS PERFORMER 766W PLD  
RLB MISS ULTRA 826U

Long bodied Fargo showing early maturity and great growth.

|      |        |
|------|--------|
| CE   | 4.3    |
| BW   | 0.6    |
| WW   | 43     |
| YW   | 80     |
| MILK | 10     |
| MCE  | 1.9    |
| MTL  | 31     |
| SC   | 1.2    |
| TSI  | 217.94 |
| CW   | 38     |
| REA  | 0.74   |
| FAT  | 0.027  |
| MARB | -0.03  |

**613 RLB FARGO STAR 613H**

Polled  
Reg. #M944778

BD: 03/14/20 BW: 94 WW: 764 Ratio: 105  
YW: \_\_\_\_\_ ADG: \_\_\_\_\_

SPARROWS FARGO 811U  
RBM FARGO Y111  
HC RHINESTONE 5100

WINN MANS LANZA 610S  
SPARROWS DELIGHT 74L  
LT EASY PRO 1158 PLD  
HC JACK 2082

LT PATRIOT 4004 PLD  
RLB MISS PATRIOT 613D  
RLB MS TOASTIE 335A

LT LEDGER 0332 P  
LK MISS RIO 2119  
KEYS CHARLES BRONSON 189X  
RLB MISS TOASTIE O 106 PLD

He is a deep ribbed Fargo son and has a big scrotal. A full brother in last years sale was equally impressive.

|      |        |
|------|--------|
| CE   | 5.4    |
| BW   | 1.1    |
| WW   | 46     |
| YW   | 91     |
| MILK | 15     |
| MCE  | 5.2    |
| MTL  | 38     |
| SC   | 1.1    |
| TSI  | 230.26 |
| CW   | 39     |
| REA  | 0.82   |
| FAT  | 0.024  |
| MARB | -0.03  |



**615 RLB ROYALE RANSOM 615H**

Polled  
Reg. #M944780

BD: 03/13/20 BW: 90 WW: 781 Ratio: 104  
YW: \_\_\_\_\_ ADG: \_\_\_\_\_

LT JOURNEY 5208 PLD  
LT RANSOM 8644  
LT SHEILA 337 PLD

LT QUEST 2203 PLD  
LT MOLLY 3011 PLD  
LT BLUE VALUE 7903 ET  
LT MISS BREEZY 524

LT PATRIOT 4004 PLD  
RLB MISS ROYALE 615D  
RLB ISS ROYALE 302A

LT LEDGER 0332 P  
LK MISS RIO 2119  
EC ROYALTIES 7027 PLD  
RLB MS MCCOY923

Pretty nice Ransom Patriot cross. Above average numbers across the board.

|      |        |
|------|--------|
| CE   | 2.4    |
| BW   | 0.5    |
| WW   | 37     |
| YW   | 73     |
| MILK | 15     |
| MCE  | 1.8    |
| MTL  | 34     |
| SC   | 1.0    |
| TSI  | 220.44 |
| CW   | 22     |
| REA  | 0.69   |
| FAT  | 0.004  |
| MARB | 0.16   |

**635 RLB TRAVELER 635H**

Polled  
Reg. #M944730

BD: 04/03/20 BW: 92 WW: 765 Ratio: 105  
YW: \_\_\_\_\_ ADG: \_\_\_\_\_

LT JOURNEY 5208 PLD  
LT JOURNEY 7657 PLD  
LT GALA 4822 PLD

LT QUEST 2203 PLD  
LT MOLLY 3011 PLD  
LT LEDGER 0332 P  
LK MISS WIND 220

EC ABOUT TIME 5027 PLD  
RLB MS UNLIMITED 635D  
RLB MISS UNLIMITED 014

EC NO DOUBT 2022 P  
EC TRENDY LADY 5027 P  
SCR SIR GRID MAKER 6032  
RLB MISS LIMITLESS 601S

I like this Journey son a lot. A bull for all purposes. Great numbers.

|      |        |
|------|--------|
| CE   | 2.7    |
| BW   | 1.4    |
| WW   | 44     |
| YW   | 83     |
| MILK | 9      |
| MCE  | 2.3    |
| MTL  | 32     |
| SC   | 1.3    |
| TSI  | 224.25 |
| CW   | 25     |
| REA  | 0.66   |
| FAT  | 0.020  |
| MARB | 0.08   |



**636 RLB MAJOR 636H**

Polled  
Reg. #M944779

BD: 03/13/20 BW: 90 WW: 698 Ratio: 102  
YW: \_\_\_\_\_ ADG: \_\_\_\_\_

LT JOURNEY 5208 PLD  
LT RANSOM 8644  
LT SHEILA 337 PLD

LT QUEST 2203 PLD  
LT MOLLY 3011 PLD  
LT BLUE VALUE 7903 ET  
LT MISS BREEZY 524

RBM FARGO Y111  
RLB MISS FARGO 636D  
RLB MISS TINA 121Y PLD

SPARROWS FARGO 811U  
HC RHINESTONE 5100  
SCR SIR GRID MAKER 6032  
RLB MS TINA 746T

The Ransom and Fargo pedigrees are working pretty well. This bull has some extra hair to compliment his structure and bone. Good bull.

|      |        |
|------|--------|
| CE   | 4.2    |
| BW   | 0.5    |
| WW   | 40     |
| YW   | 74     |
| MILK | 16     |
| MCE  | 1.8    |
| MTL  | 36     |
| SC   | 1.0    |
| TSI  | 219.39 |
| CW   | 25     |
| REA  | 0.72   |
| FAT  | -0.006 |
| MARB | 0.11   |

**643 RLB MASTERCRAFT 643H**

Polled  
Reg. #M944789

BD: 03/10/20 BW: 82 WW: 675 Ratio: 90  
YW: \_\_\_\_\_ ADG: \_\_\_\_\_

LT JOURNEY 5208 PLD  
LT RANSOM 8644  
LT SHEILA 337 PLD

LT QUEST 2203 PLD  
LT MOLLY 3011 PLD  
LT BLUE VALUE 7903 ET  
LT MISS BREEZY 524

EC MAJOR IMPACT 107 PLD  
RLB MS MASTERS 643D  
RLB MISS MASTER 450B P

EC SILVER DISTANCE 740 PLD  
EC DYNASTY 107 PLD  
RBM FARGO Y111  
RLB MS MASTER 838U

This low BW bull has a nice pattern and is gaining well in the feedlot. He fits in.

|      |        |
|------|--------|
| CE   | 6.0    |
| BW   | -1.1   |
| WW   | 26     |
| YW   | 52     |
| MILK | 17     |
| MCE  | 5.6    |
| MTL  | 30     |
| SC   | 1.0    |
| TSI  | 200.53 |
| CW   | 19     |
| REA  | 0.64   |
| FAT  | -0.003 |
| MARB | 0.09   |

**MARTIN-TRUDEAU INSURANCE**

Call Us For Your Insurance Needs

1531 W Elm, PO Box 487 • Mitchell, SD 57301

605.996.3106 • 605.770.5170 C

www.martin-trudeauinsurance.com

- Farm
- Livestock Mortality/ ASD Infertility
- Commercial
- Crop
- Home
- Auto

KATIE WILLIAMS

CHRISTOPHER NELSON

RANDA DEAN

RAY TRUDEAU

AMY BUSSMUSS-PUPEPKE





### 657 RLB PRIZE 657H

Polled  
Reg. #:M944762

BD: 03/23/20 BW: 86 WW: 759 Ratio: 101  
YW: \_\_\_\_\_ ADG: \_\_\_\_\_

HTA ASTROID 603D  
HTA UNDEFEATED 8115F  
HTA SARA 447B

RBM FARGO Y111  
RLB MYSTERY MISS 657D  
RLB MISS TONYA 724T

HTA BRAVIA 855U  
HTA BRIDGET 704T  
C2 ZEPLIN 45Z  
HTA SARA 9107W

SPARROWS FARGO 811U  
HC RHINESTONE 5100  
RC MCCOY 2177 PLD  
RLB MS BLAZE H817 TW

Easy doing and soft made feeding machine. House cat disposition.

|      |        |
|------|--------|
| CE   | 5.6    |
| BW   | 0.4    |
| WW   | 36     |
| YW   | 72     |
| MILK | 6      |
| MCE  | 7.2    |
| MTL  | 24     |
| SC   | 0.9    |
| TSI  | 216.90 |
| CW   | 30     |
| REA  | 0.92   |
| FAT  | 0.010  |
| MARB | 0.05   |

### 658 RLB LAST CALL 658H

Polled  
Reg. #:M944734

BD: 04/01/20 BW: 92 WW: 704 Ratio: 93  
YW: \_\_\_\_\_ ADG: \_\_\_\_\_

HTA ASTROID 603D  
HTA UNDEFEATED 8115F  
HTA SARA 447B

EC ABOUT TIME 5027 PLD  
RLB MS TRISTA 658D  
RLB MISS TRISTA 141Y PLD

HTA BRAVIA 855U  
HTA BRIDGET 704T  
C2 ZEPLIN 45Z  
HTA SARA 9107W

EC NO DOUBT 2022 P  
EC TRENDY LADY 5027 P  
KEYS MAGNUM 44U  
RLB MISS TRISTA 732T

A big bodied bull you'll appreciate. The Undeclared calves are feeding very well.

|      |        |
|------|--------|
| CE   | 5.3    |
| BW   | 0.6    |
| WW   | 38     |
| YW   | 74     |
| MILK | 6      |
| MCE  | 6.5    |
| MTL  | 25     |
| SC   | 1.0    |
| TSI  | 218.42 |
| CW   | 33     |
| REA  | 0.88   |
| FAT  | 0.016  |
| MARB | 0.05   |

### 668 RLB FARMER 668H

Polled  
Reg. #:M944790

BD: 03/10/20 BW: 84 WW: 726 Ratio: 96  
YW: \_\_\_\_\_ ADG: \_\_\_\_\_

SPARROWS FARGO 811U  
RBM FARGO Y111  
HC RHINESTONE 5100

WINN MANS LANZA 610S  
SPARROWS DELIGHT 74L  
LT EASY PRO 1158 PLD  
HC JACK 2082

EC SILVER DISTANCE 740 PLD  
EC DYNASTY 107 PLD  
WCR HEAVY DUTY 237 P  
RLB MS SYBIL 118Y PLD

EC MAJOR IMPACT 107 PLD  
RLB MS SYBIL 668D  
RLB MS SYBIL 477B P

Moderate BW and extra rib. Fargo keeps making them good.

|      |        |
|------|--------|
| CE   | 7.9    |
| BW   | -0.5   |
| WW   | 37     |
| YW   | 71     |
| MILK | 18     |
| MCE  | 8.6    |
| MTL  | 36     |
| SC   | 1.3    |
| TSI  | 213.18 |
| CW   | 34     |
| REA  | 0.87   |
| FAT  | 0.016  |
| MARB | -0.06  |

### 651 RLB CATTLEMMASTER 651H

Polled  
Reg. #:M944771

BD: 03/18/20 BW: 94 WW: 798 Ratio: 106  
YW: \_\_\_\_\_ ADG: \_\_\_\_\_

LT JOURNEY 5208 PLD  
LT RANSOM 8644  
LT SHEILA 337 PLD

LT QUEST 2203 PLD  
LT MOLLY 3011 PLD  
LT BLUE VALUE 7903 ET  
LT MISS BREEZY 524

EC ABOUT TIME 5027 PLD  
RLB MISS MAKE TIME 651D  
RLB MISS MAKO 056

EC NO DOUBT 2022 P  
EC TRENDY LADY 5027 P  
SCR SIR GRID MAKER 6032  
RLB MS LIMITLESS 512

This cow has done it again. Raised an impressive bull 3 years in a row.

|      |        |
|------|--------|
| CE   | 1.3    |
| BW   | 1.5    |
| WW   | 42     |
| YW   | 77     |
| MILK | 17     |
| MCE  | -0.4   |
| MTL  | 38     |
| SC   | 0.9    |
| TSI  | 220.90 |
| CW   | 24     |
| REA  | 0.80   |
| FAT  | 0.001  |
| MARB | 0.12   |



### 659 RLB MR RANDAL 659H

Polled  
Reg. #:M944764

BD: 03/22/20 BW: 78 WW: 695 Ratio: 92  
YW: \_\_\_\_\_ ADG: \_\_\_\_\_

LT JOURNEY 5208 PLD  
LT RANSOM 8644  
LT SHEILA 337 PLD

LT QUEST 2203 PLD  
LT MOLLY 3011 PLD  
LT BLUE VALUE 7903 ET  
LT MISS BREEZY 524

RBM FARGO Y111  
RLB MISS SHAR 659D  
RLB MISS SHAR 219Z

SPARROWS FARGO 811U  
HC RHINESTONE 5100  
JLS PERFORMER 766W PLD  
RLB MS SHARLENE 604S

Moderate frame bull with an extra low BW and nice muscle shape.

|      |        |
|------|--------|
| CE   | 9.1    |
| BW   | -1.9   |
| WW   | 29     |
| YW   | 61     |
| MILK | 16     |
| MCE  | 5.9    |
| MTL  | 31     |
| SC   | 1.1    |
| TSI  | 211.13 |
| CW   | 25     |
| REA  | 0.63   |
| FAT  | -0.003 |
| MARB | 0.11   |

### 669 RLB RANSOM 669H

Polled  
Reg. #:M944750

BD: 03/24/20 BW: 88 WW: 731 Ratio: 100  
YW: \_\_\_\_\_ ADG: \_\_\_\_\_

LT JOURNEY 5208 PLD  
LT RANSOM 8644  
LT SHEILA 337 PLD

LT QUEST 2203 PLD  
LT MOLLY 3011 PLD  
LT BLUE VALUE 7903 ET  
LT MISS BREEZY 524

WCR SIR KINGSBURY 345 P  
RLB MS LAZY 669D  
RLB MS LAZY 205AZ TW

WCR KINGSBURY 116 P  
WCR MS PAUL 1171 P  
JLS PERFORMER 766W PLD  
RLB MISS IMPRESSED 758

One after another, the consistency of the offering keeps going. You will like his shape and depth. His numbers all work.

|      |        |
|------|--------|
| CE   | 2.7    |
| BW   | -0.3   |
| WW   | 37     |
| YW   | 67     |
| MILK | 10     |
| MCE  | -0.5   |
| MTL  | 29     |
| SC   | 0.8    |
| TSI  | 213.35 |
| CW   | 18     |
| REA  | 0.57   |
| FAT  | -0.002 |
| MARB | 0.17   |

R LAZY B RANCH  
672

## RLB FARGO TRACTOR 672H

Polled  
Reg. #.M944785

BD: 03/12/20 BW: 90 WW: 793 Ratio: 105  
YW: \_\_\_\_\_ ADG: \_\_\_\_\_

RBM FARGO Y111 SPARROWS FARGO 811U  
HC RHINESTONE 5100 WINN MANS LANZA 610S  
SPARROWS DELIGHT 74L  
LT EASY PRO 1158 PLD  
HC JACK 2082  
EC WESTERN WAY 6335 PLD  
RLB MISS WIND 672D IQCR MS CHAS GRID'S 6335 P  
RLB MISS KEY WIND 906 THREE TREES WIND 0383 ET  
RLB MISS KEY 751T

Every time this bull has stepped on the scale since weaning he has been the heaviest bull of the pen. Fargo at it's best.

|      |        |
|------|--------|
| CE   | 7.6    |
| BW   | 0.5    |
| WW   | 44     |
| YW   | 82     |
| MILK | 12     |
| MCE  | 7.3    |
| MTL  | 34     |
| SC   | 1.3    |
| TSI  | 222.78 |
| CW   | 35     |
| REA  | 0.93   |
| FAT  | 0.019  |
| MARB | -0.01  |



R LAZY B RANCH  
701

## RLB PATHAND 701H

Polled  
Reg. #.M944748

BD: 03/26/20 BW: 84 WW: 774 Ratio: 103  
YW: \_\_\_\_\_ ADG: \_\_\_\_\_

LT JOURNEY 5208 PLD LT QUEST 2203 PLD  
LT RANSOM 8644 LT MOLLY 3011 PLD  
LT SHEILA 337 PLD LT BLUE VALUE 7903 ET  
LT MISS BREEZY 524  
LT PATRIOT 4004 PLD LT LEDGER 0332 P  
RLB MS PATRIOTIC 701E LK MISS RIO 2119  
RLB MISS CHUCKLES 546C PLD EC MAJOR IMPACT 107 PLD  
RLB MS CHUCKLES 237Z

Moderate frame bull that has a bold spring of rib and plenty of volume.

|      |        |
|------|--------|
| CE   | 5.6    |
| BW   | -1.0   |
| WW   | 34     |
| YW   | 68     |
| MILK | 16     |
| MCE  | 3.1    |
| MTL  | 33     |
| SC   | 0.9    |
| TSI  | 216.78 |
| CW   | 18     |
| REA  | 0.61   |
| FAT  | 0.003  |
| MARB | 0.16   |



R LAZY B RANCH  
675

## RLB MR TUKO 675H

Polled  
Reg. #.M944743

BD: 03/29/20 BW: 98 WW: 747 Ratio: 99  
YW: \_\_\_\_\_ ADG: \_\_\_\_\_

HTA ASTROID 603D HTA BRAVIA 855U  
HTA UNDEFEATED 8115F HTA BRIDGET 704T  
HTA SARA 447B C2 ZEPLIN 45Z  
HTA SARA 9107W  
WCR SIR KINGSBURY 345 P WCR KINGSBURY 116 P  
RLB MISS TUKO 675D WCR MS PAUL 1171 P  
RLB MISS TUKO 061 TW KEYS MAGNUM 44U  
RLB MISS TUKO 715T TW

Another nice patterned bull from a good cow family.

|      |        |
|------|--------|
| CE   | -2.9   |
| BW   | 2.5    |
| WW   | 46     |
| YW   | 80     |
| MILK | 2      |
| MCE  | -0.1   |
| MTL  | 25     |
| SC   | 1.0    |
| TSI  | 220.00 |
| CW   | 28     |
| REA  | 0.85   |
| FAT  | 0.018  |
| MARB | 0.08   |



R LAZY B RANCH  
713

## RLB MILESTONE 713H

Polled  
Reg. #.M944751

BD: 03/24/20 BW: 78 WW: 684 Ratio: 92  
YW: \_\_\_\_\_ ADG: \_\_\_\_\_

WC MILESTONE 5223 P WC BENELLI 2134 P ET  
WC MILESTONE 8224 P WC LADY BLUE 0506 P  
WC LACE 3420 P ET WC BIG BEN 9036 P  
LT LACE MAKER 6085 P  
RBM FARGO Y111 SPARROWS FARGO 811U  
RLB MISS FARGO 713E HC RHINESTONE 5100  
RLB MISS UNITED 317A JLS PERFORMER 766W PLD  
RLB MISS UNLIMITED 854U

Moderate frame, cleanly made and extra long. Fine enough to be a heifer bull.

|      |        |
|------|--------|
| CE   | 9.9    |
| BW   | -1.7   |
| WW   | 32     |
| YW   | 67     |
| MILK | 10     |
| MCE  | 9.1    |
| MTL  | 25     |
| SC   | 1.1    |
| TSI  | 215.93 |
| CW   | 29     |
| REA  | 0.83   |
| FAT  | -0.001 |
| MARB | 0.05   |

YEARLING BULLS



R LAZY B RANCH  
719

## RLB BAYOU 719H

Polled  
Reg. #:M944741

|                     |                   |                |                   |             |        |
|---------------------|-------------------|----------------|-------------------|-------------|--------|
| <b>BD:</b> 03/30/20 | <b>BW:</b> 86     | <b>WW:</b> 782 | <b>Ratio:</b> 106 | <b>CE</b>   | 8.5    |
| <b>YW:</b> _____    | <b>ADG:</b> _____ |                |                   | <b>BW</b>   | -0.5   |
|                     |                   |                |                   | <b>VW</b>   | 40     |
|                     |                   |                |                   | <b>YW</b>   | 77     |
|                     |                   |                |                   | <b>MILK</b> | 11     |
|                     |                   |                |                   | <b>MCE</b>  | 9.9    |
|                     |                   |                |                   | <b>MTL</b>  | 32     |
|                     |                   |                |                   | <b>SC</b>   | 1.2    |
|                     |                   |                |                   | <b>TSI</b>  | 223.34 |
|                     |                   |                |                   | <b>CW</b>   | 26     |
|                     |                   |                |                   | <b>REA</b>  | 0.88   |
|                     |                   |                |                   | <b>FAT</b>  | 0.007  |
|                     |                   |                |                   | <b>MARB</b> | 0.07   |

WC MILESTONE 5223 P  
WC MILESTONE 8224 P  
WC LACE 3420 P ET

WC BENELLI 2134 P ET  
WC LADY BLUE 0506 P  
WC BIG BEN 9036 P  
LT LACE MAKER 6085 P

RBM FARGO Y111  
RLB MISS BAYOU 719E  
RLB MISS BAYOU 407B P

SPARROWS FARGO 811U  
HC RHINESTONE 5100  
LT BLUE VALUE 7903 ET  
RLB MISS CHARLIE 261Z

The Milestones are moderate frame cattle that still push the scale down. Bold sprung and meaty.

R LAZY B RANCH  
727

## RLB JETLINER 727H

Polled  
Reg. #:M944795

|                     |                   |                |                  |             |        |
|---------------------|-------------------|----------------|------------------|-------------|--------|
| <b>BD:</b> 03/06/20 | <b>BW:</b> 70     | <b>WW:</b> 706 | <b>Ratio:</b> 94 | <b>CE</b>   | 10.1   |
| <b>YW:</b> _____    | <b>ADG:</b> _____ |                |                  | <b>BW</b>   | -2.9   |
|                     |                   |                |                  | <b>VW</b>   | 31     |
|                     |                   |                |                  | <b>YW</b>   | 63     |
|                     |                   |                |                  | <b>MILK</b> | 10     |
|                     |                   |                |                  | <b>MCE</b>  | 6.5    |
|                     |                   |                |                  | <b>MTL</b>  | 26     |
|                     |                   |                |                  | <b>SC</b>   | 1.1    |
|                     |                   |                |                  | <b>TSI</b>  | 209.16 |
|                     |                   |                |                  | <b>CW</b>   | 32     |
|                     |                   |                |                  | <b>REA</b>  | 0.61   |
|                     |                   |                |                  | <b>FAT</b>  | 0.049  |
|                     |                   |                |                  | <b>MARB</b> | 0.06   |

LT LEDGER 0332 P  
LT PATRIOT 4004 PLD  
LK MISS RIO 2119

LT BLUEGRASS 4017 P  
LT BRENDA 6120 PLD  
LK DISTANT RIO 900  
LK MISS SILVER T 059

RBM FARGO Y111  
RLB MISS TIME 727E  
RLB MS TIMELESS 403B P

SPARROWS FARGO 811U  
HC RHINESTONE 5100  
LT LEDGER 0332 P  
RLB TIME PIECE 228Z

Extra low BW heifer bull prospect.



R LAZY B RANCH  
734

## RLB FARGO SPECIAL 734H

Polled  
Reg. #:M944773

|                     |                   |                |                   |             |        |
|---------------------|-------------------|----------------|-------------------|-------------|--------|
| <b>BD:</b> 03/17/20 | <b>BW:</b> 88     | <b>WW:</b> 766 | <b>Ratio:</b> 102 | <b>CE</b>   | 8.9    |
| <b>YW:</b> _____    | <b>ADG:</b> _____ |                |                   | <b>BW</b>   | -1.0   |
|                     |                   |                |                   | <b>VW</b>   | 39     |
|                     |                   |                |                   | <b>YW</b>   | 76     |
|                     |                   |                |                   | <b>MILK</b> | 15     |
|                     |                   |                |                   | <b>MCE</b>  | 1.2    |
|                     |                   |                |                   | <b>MTL</b>  | 34     |
|                     |                   |                |                   | <b>SC</b>   | 0.9    |
|                     |                   |                |                   | <b>TSI</b>  | 216.77 |
|                     |                   |                |                   | <b>CW</b>   | 31     |
|                     |                   |                |                   | <b>REA</b>  | 0.84   |
|                     |                   |                |                   | <b>FAT</b>  | 0.023  |
|                     |                   |                |                   | <b>MARB</b> | -0.10  |

SPARROWS FARGO 811U  
RBM FARGO Y111  
HC RHINESTONE 5100

WINN MANS LANZA 610S  
SPARROWS DELIGHT 74L  
LT EASY PRO 1158 PLD  
HC JACK 2082

LT LANDMARK 5052 PLD  
RLB MS SPECIAL 734E  
RLB MISS SPECK 535C PLD

LT RUSHMORE 8060 PLD  
LT JENNY 3028 PLD  
EC ABOUT TIME 5027 PLD  
RLB MISS SPECTACOLOR 944

Sharp looking bull, great choice for anyone's program.

R LAZY B RANCH  
722

## RLB RASCAL 722H

Polled  
Reg. #:M944788

|                     |                   |                |                   |             |        |
|---------------------|-------------------|----------------|-------------------|-------------|--------|
| <b>BD:</b> 03/11/20 | <b>BW:</b> 86     | <b>WW:</b> 805 | <b>Ratio:</b> 109 | <b>CE</b>   | 5.6    |
| <b>YW:</b> _____    | <b>ADG:</b> _____ |                |                   | <b>BW</b>   | 0.2    |
|                     |                   |                |                   | <b>VW</b>   | 44     |
|                     |                   |                |                   | <b>YW</b>   | 85     |
|                     |                   |                |                   | <b>MILK</b> | 14     |
|                     |                   |                |                   | <b>MCE</b>  | 3.8    |
|                     |                   |                |                   | <b>MTL</b>  | 36     |
|                     |                   |                |                   | <b>SC</b>   | 1.3    |
|                     |                   |                |                   | <b>TSI</b>  | 229.63 |
|                     |                   |                |                   | <b>CW</b>   | 27     |
|                     |                   |                |                   | <b>REA</b>  | 0.74   |
|                     |                   |                |                   | <b>FAT</b>  | 0.007  |
|                     |                   |                |                   | <b>MARB</b> | 0.10   |

LT JOURNEY 5208 PLD  
LT RANSOM 8644  
LT SHEILA 337 PLD

LT QUEST 2203 PLD  
LT MOLLY 3011 PLD  
LT BLUE VALUE 7903 ET  
LT MISS BREEZY 524

RBM FARGO Y111  
RLB MS MASTERCRAFT 722E  
RLB MS MASTERS 310A

SPARROWS FARGO 811U  
HC RHINESTONE 5100  
LT LEDGER 0332 P  
RLB MS MASTER 132Y TW

This Ransom is built like the new Bank on the corner downtown. Solid as a brick! You'll like him.



R LAZY B RANCH  
733

## RLB RANGER 733H

Polled  
Reg. #:M944787

|                     |                   |                |                   |             |        |
|---------------------|-------------------|----------------|-------------------|-------------|--------|
| <b>BD:</b> 03/11/20 | <b>BW:</b> 104    | <b>WW:</b> 737 | <b>Ratio:</b> 100 | <b>CE</b>   | -3.2   |
| <b>YW:</b> _____    | <b>ADG:</b> _____ |                |                   | <b>BW</b>   | 2.8    |
|                     |                   |                |                   | <b>VW</b>   | 42     |
|                     |                   |                |                   | <b>YW</b>   | 79     |
|                     |                   |                |                   | <b>MILK</b> | 14     |
|                     |                   |                |                   | <b>MCE</b>  | -2.9   |
|                     |                   |                |                   | <b>MTL</b>  | 34     |
|                     |                   |                |                   | <b>SC</b>   | 1.0    |
|                     |                   |                |                   | <b>TSI</b>  | 221.76 |
|                     |                   |                |                   | <b>CW</b>   | 24     |
|                     |                   |                |                   | <b>REA</b>  | 0.55   |
|                     |                   |                |                   | <b>FAT</b>  | 0.003  |
|                     |                   |                |                   | <b>MARB</b> | 0.15   |

LT JOURNEY 5208 PLD  
LT RANSOM 8644  
LT SHEILA 337 PLD

LT QUEST 2203 PLD  
LT MOLLY 3011 PLD  
LT BLUE VALUE 7903 ET  
LT MISS BREEZY 524

LT PATRIOT 4004 PLD  
RLB PATTSI 733E  
RLB REWARDING 320A

LT LEDGER 0332 P  
LK MISS RIO 2119  
JLS PERFORMER 766W PLD  
RLB MISS REWARD 749T

Perfect conformation on a moderate frame with extra hair. Show quality.



R LAZY B RANCH  
742

## RLB GENERAL 742H

Polled  
Reg. #:M944781

|                       |                         |                   |                   |             |        |
|-----------------------|-------------------------|-------------------|-------------------|-------------|--------|
| <b>BD:</b> 03/12/20   | <b>BW:</b> 92           | <b>WW:</b> 791    | <b>Ratio:</b> 107 | <b>CE</b>   | 2.4    |
|                       | <b>YW:</b> _____        | <b>ADG:</b> _____ |                   | <b>BW</b>   | 1.4    |
|                       |                         |                   |                   | <b>WW</b>   | 40     |
|                       |                         |                   |                   | <b>YW</b>   | 74     |
| LT JOURNEY 5208 PLD   | LT QUEST 2203 PLD       |                   |                   | <b>MILK</b> | 15     |
| LT RANSOM 8644        | LT MOLLY 3011 PLD       |                   |                   | <b>MCE</b>  | 2.2    |
| LT SHEILA 337 PLD     | LT BLUE VALUE 7903 ET   |                   |                   | <b>MTL</b>  | 35     |
|                       | LT MISS BREEZY 524      |                   |                   | <b>SC</b>   | 1.1    |
|                       | LT BLUEGRASS 4017 P     |                   |                   | <b>TSI</b>  | 220.73 |
| LT LEDGER 0332 P      | LT BRENDA 6120 PLD      |                   |                   | <b>CW</b>   | 23     |
| RLB MISS SYBIL 742E   | SCR SIR GRID MAKER 6032 |                   |                   | <b>REA</b>  | 0.81   |
| RLB MS SYBIL 118Y PLD | RLB MS SYBIL 651S       |                   |                   | <b>FAT</b>  | 0.013  |
|                       |                         |                   |                   | <b>MARB</b> | 0.23   |

Long spined bull that carries a big spring of rib and stout hind leg. He's shown that pattern since he was 2 weeks old.



R LAZY B RANCH  
786

## RLB MILLSTONE 786H

Polled  
Reg. #:M944796

|                          |                       |                   |                   |             |        |
|--------------------------|-----------------------|-------------------|-------------------|-------------|--------|
| <b>BD:</b> 03/06/20      | <b>BW:</b> 88         | <b>WW:</b> 749    | <b>Ratio:</b> 101 | <b>CE</b>   | 6.3    |
|                          | <b>YW:</b> _____      | <b>ADG:</b> _____ |                   | <b>BW</b>   | -0.1   |
|                          |                       |                   |                   | <b>WW</b>   | 41     |
|                          |                       |                   |                   | <b>YW</b>   | 76     |
| WC MILESTONE 5223 P      | WC BENELLI 2134 P ET  |                   |                   | <b>MILK</b> | 4      |
| WC MILESTONE 8224 P      | WC LADY BLUE 0506 P   |                   |                   | <b>MCE</b>  | 4.6    |
| WC LACE 3420 P ET        | WC BIG BEN 9036 P     |                   |                   | <b>MTL</b>  | 25     |
|                          | LT LACE MAKER 6085 P  |                   |                   | <b>SC</b>   | 1.2    |
|                          | LT LEDGER 0332 P      |                   |                   | <b>TSI</b>  | 222.82 |
| LT COMMISSIONER 5232 PLD | LT BALLET 9219 POLLED |                   |                   | <b>CW</b>   | 26     |
| RLB MS COW MAKER 786E    | RBM FARGO Y111        |                   |                   | <b>REA</b>  | 0.93   |
| RLB MS COW MAKER 484B P  | RLB MS MAKER 933      |                   |                   | <b>FAT</b>  | 0.012  |
|                          |                       |                   |                   | <b>MARB</b> | 0.14   |

A fancy Milestone with extra length.



R LAZY B RANCH  
753

## RLB MR SLICK 753H

Polled  
Reg. #:M944791

|                     |                       |                   |                   |             |        |
|---------------------|-----------------------|-------------------|-------------------|-------------|--------|
| <b>BD:</b> 03/10/20 | <b>BW:</b> 87         | <b>WW:</b> 756    | <b>Ratio:</b> 102 | <b>CE</b>   | 4.3    |
|                     | <b>YW:</b> _____      | <b>ADG:</b> _____ |                   | <b>BW</b>   | -0.5   |
|                     |                       |                   |                   | <b>WW</b>   | 33     |
|                     |                       |                   |                   | <b>YW</b>   | 65     |
| LT JOURNEY 5208 PLD | LT QUEST 2203 PLD     |                   |                   | <b>MILK</b> | 17     |
| LT RANSOM 8644      | LT MOLLY 3011 PLD     |                   |                   | <b>MCE</b>  | 2.0    |
| LT SHEILA 337 PLD   | LT BLUE VALUE 7903 ET |                   |                   | <b>MTL</b>  | 33     |
|                     | LT MISS BREEZY 524    |                   |                   | <b>SC</b>   | 0.9    |
|                     | LT LEDGER 0332 P      |                   |                   | <b>TSI</b>  | 213.06 |
| LT PATRIOT 4004 PLD | LK MISS RIO 2119      |                   |                   | <b>CW</b>   | 22     |
| RLB MISS SILK 753E  | RC LIMITLESS 136 PLD  |                   |                   | <b>REA</b>  | 0.51   |
| RLB MS SILK 622S    | RLB MS CATHY 119L PLD |                   |                   | <b>FAT</b>  | 0.007  |
|                     |                       |                   |                   | <b>MARB</b> | 0.18   |

Wide top and deep quartered.



R LAZY B RANCH  
806

## RLB OIL RIG 806H

Polled  
Reg. #:M944937

|                         |                          |                   |                   |             |        |
|-------------------------|--------------------------|-------------------|-------------------|-------------|--------|
| <b>BD:</b> 03/05/20     | <b>BW:</b> 82            | <b>WW:</b> 722    | <b>Ratio:</b> 101 | <b>CE</b>   | 11.4   |
|                         | <b>YW:</b> _____         | <b>ADG:</b> _____ |                   | <b>BW</b>   | -2.3   |
|                         |                          |                   |                   | <b>WW</b>   | 26     |
|                         |                          |                   |                   | <b>YW</b>   | 46     |
| BHC TOP PRO 7025 P      | LT EASY PRO 1158 PLD     |                   |                   | <b>MILK</b> | 21     |
| LT TIOGA 4090 PLD       | BHC MS WATCHMAN 2053 P   |                   |                   | <b>MCE</b>  | 4.9    |
| LT BRENDA 8034 PLD      | LT SILVER DISTANCE 5342P |                   |                   | <b>MTL</b>  | 33     |
|                         | LT BRENDA 6120 PLD       |                   |                   | <b>SC</b>   | 0.5    |
|                         | LT RUSHMORE 8060 PLD     |                   |                   | <b>TSI</b>  | 195.09 |
| LT LANDMARK 5052 PLD    | LT JENNY 3028 PLD        |                   |                   | <b>CW</b>   | 11     |
| RLB MS BLUE MARK 806F   | LT BLUE RAY 3316 TW PLD  |                   |                   | <b>REA</b>  | 0.70   |
| RLB MISS BLUE WEST 609D | RLB MS WEST WIND 4228 P  |                   |                   | <b>FAT</b>  | 0.016  |
|                         |                          |                   |                   | <b>MARB</b> | 0.10   |

Super thick Tioga everyone should like. Power enough for cows, calving ease for heifers.

YEARLING BULLS



**809 RLB MORE TIME 809H**

Polled  
Reg. #:M944756

BD: 03/21/20 BW: 88 WW: 776 Ratio: 109  
YW: \_\_\_\_\_ ADG: \_\_\_\_\_

LT RUSHMORE 8060 PLD  
LT RUSHMORE 7529 PLD  
LT PETRA 5565 PLD

LT RIO BRAVO 3181 P  
LT BRENDA'S EASE 3055PLD  
LT BLUEGRASS 3417 PLD  
LT PETRA 306 PLD

RBM FARGO Y111  
RLB MS TIMELESS 809F  
RLB MS TIMELESS 403B P

SPARROWS FARGO 811U  
HC RHINESTONE 5100  
LT LEDGER 0332 P  
RLB TIME PIECE 228Z

Great performing Rushmore and Fargo breeding.

|      |        |
|------|--------|
| CE   | 5.4    |
| BW   | -0.3   |
| VW   | 38     |
| YW   | 72     |
| MILK | 16     |
| MCE  | 1.3    |
| MTL  | 35     |
| SC   | 1.0    |
| TSI  | 215.43 |
| CW   | 26     |
| REA  | 0.65   |
| FAT  | 0.045  |
| MARB | 0.11   |



**831 RLB CHECK MARK 831H**

Polled  
Reg. #:M944940

BD: 03/02/20 BW: 70 WW: 702 Ratio: 98  
YW: \_\_\_\_\_ ADG: \_\_\_\_\_

LT RUSHMORE 8060 PLD  
LT LANDMARK 5052 PLD  
LT JENNY 3028 PLD

LT RIO BRAVO 3181 P  
LT BRENDA'S EASE 3055PLD  
LT LONG DISTANCE 9001 PLD  
LT JENNY 1291 PLD

RBM FARGO Y111  
RLB MISS K 831F  
RLB MISS KUDO 313A

SPARROWS FARGO 811U  
HC RHINESTONE 5100  
LT LEDGER 0332 P  
RLB MISS KUDO 152Y PLD

A sleep all night heifer bull for any color program.

|      |        |
|------|--------|
| CE   | 13.5   |
| BW   | -4.1   |
| VW   | 26     |
| YW   | 54     |
| MILK | 21     |
| MCE  | -1.4   |
| MTL  | 34     |
| SC   | 0.7    |
| TSI  | 203.92 |
| CW   | 21     |
| REA  | 0.86   |
| FAT  | 0.013  |
| MARB | -0.01  |



**829 RLB MR TIOGA 829H**

Polled  
Reg. #:M944932

BD: 03/10/20 BW: 90 WW: 747 Ratio: 105  
YW: \_\_\_\_\_ ADG: \_\_\_\_\_

BHC TOP PRO 7025 P  
LT TIOGA 4090 PLD  
LT BRENDA 8034 PLD

LT EASY PRO 1158 PLD  
BHC MS WATCHMAN 2053 P  
LT SILVER DISTANCE 5342P  
LT BRENDA 6120 PLD

WC DURATION 6245 P  
RLB MISS DEMARA 829F  
RLB MISS DEMARA 634D

LT RUSHMORE 8060 PLD  
WC DUCHESS 1509 P  
EC ABOUT TIME 5027 PLD  
RLB MISS DEMARA 972

Good stretch and nice to look at. A hard working first time mother. Good job!

|      |        |
|------|--------|
| CE   | 6.0    |
| BW   | -0.7   |
| VW   | 32     |
| YW   | 57     |
| MILK | 18     |
| MCE  | 2.8    |
| MTL  | 34     |
| SC   | 0.7    |
| TSI  | 203.39 |
| CW   | 17     |
| REA  | 0.68   |
| FAT  | 0.022  |
| MARB | 0.14   |



## View the Auction Live! Bid Online... you're ringside right at your desk!

Buying online is as easy as 1, 2, 3...

1. Create an account at [www.DVAuction.com](http://www.DVAuction.com) under the "Register" tab
2. Apply for bidding approval by clicking on the "details" tab at least 24 hours prior to the auction — a DV representative will notify you once you have been approved.
3. Tune in for the sale to make your purchases!

**High Speed internet** is required for successful bidding - be sure to check the lag-time monitor in the top left corner to ensure real-time broadcasts.

**Proxy-bidding** — if you can't make time to watch the sale, register a proxy bid and let our system represent your bid while you're away. Look for the "proxy bid" tab on the auction listing, and fill in your maximum bids. We'll handle the rest!

For General Questions Please contact Our Office: 402-316-5460 or [support@dvauction.com](mailto:support@dvauction.com)



**DVAuction**  
Broadcasting Real-Time Auctions

**LAZY B RANCH**  
**834**

## RLB MR TIOGA 834H

Polled  
Reg. #M944931

**BD:** 03/12/20 **BW:** 84 **WW:** 741 **Ratio:** 104  
**YW:** \_\_\_\_\_ **ADG:** \_\_\_\_\_

BHC TOP PRO 7025 P  
LT TIOGA 4090 PLD  
LT BRENDA 8034 PLD  
WC DURATION 6245 P  
RLB MS WINDY 834F  
RLB MISS WIND 672D  
LT EASY PRO 1158 PLD  
BHC MS WATCHMAN 2053 P  
LT SILVER DISTANCE 5342P  
LT BRENDA 6120 PLD  
LT RUSHMORE 8060 PLD  
WC DUCHESS 1509 P  
EC WESTERN WAY 6335 PLD  
RLB MISS KEY WIND 906

Good performance and a double shot of calving ease.

|      |        |
|------|--------|
| CE   | 10.6   |
| BW   | -2.2   |
| WW   | 26     |
| YW   | 49     |
| MILK | 19     |
| MCE  | 6.2    |
| MTL  | 32     |
| SC   | 0.8    |
| TSI  | 199.05 |
| CW   | 15     |
| REA  | 0.68   |
| FAT  | 0.023  |
| MARB | 0.17   |

**LAZY B RANCH**  
**863**

## RLB CASH 863H

Polled  
Reg. #M944794

**BD:** 03/06/20 **BW:** 80 **WW:** 699 **Ratio:** 98  
**YW:** \_\_\_\_\_ **ADG:** \_\_\_\_\_

LT JOURNEY 5208 PLD  
LT RANSOM 8644  
LT SHEILA 337 PLD  
LT LEDGER 0332 P  
RLB MISS SILKY 863F  
RLB MS SILK 622S  
LT QUEST 2203 PLD  
LT MOLLY 3011 PLD  
LT BLUE VALUE 7903 ET  
LT MISS BREEZY 524  
LT BLUEGRASS 4017 P  
LT BRENDA 6120 PLD  
RC LIMITLESS 136 PLD  
RLB MS CATHY 119L PLD

Lots of calving ease and carcass bred into this Ransom and Ledger pedigreed bull.

|      |        |
|------|--------|
| CE   | 3.5    |
| BW   | -0.7   |
| WW   | 29     |
| YW   | 60     |
| MILK | 14     |
| MCE  | 1.3    |
| MTL  | 29     |
| SC   | 1.0    |
| TSI  | 210.34 |
| CW   | 21     |
| REA  | 0.56   |
| FAT  | 0.015  |
| MARB | 0.21   |

**LAZY B RANCH**  
**878**

## RLB LANDMARK 878H

Polled  
Reg. #M944934

**BD:** 03/07/20 **BW:** 92 **WW:** 719 **Ratio:** 101  
**YW:** \_\_\_\_\_ **ADG:** \_\_\_\_\_

LT RUSHMORE 8060 PLD  
LT LANDMARK 5052 PLD  
LT JENNY 3028 PLD  
JLS RELENTLESS 1831 PLD  
RLB MISS RESTLESS 878F  
RLB MISS FARGO 512C PLD  
LT RIO BRAVO 3181 P  
LT BRENDA'S EASE 3055PLD  
LT LONG DISTANCE 9001 PLD  
LT JENNY 1291 PLD  
WR WRANGLER W601  
JLS RIGHT CHOICE 1831 PLD  
LT LEDGER 0332 P  
RLB MISS FARGO 303A

He is a little stretchier Landmark you could use on cows for more punch and keep the calving ease.

|      |        |
|------|--------|
| CE   | 7.3    |
| BW   | -0.2   |
| WW   | 37     |
| YW   | 69     |
| MILK | 16     |
| MCE  | -4.0   |
| MTL  | 34     |
| SC   | 0.7    |
| TSI  | 210.84 |
| CW   | 19     |
| REA  | 0.75   |
| FAT  | 0.026  |
| MARB | 0.00   |

**LAZY B RANCH**  
**887**

## RLB MR RANSOM 887F

Polled  
Reg. #M944793

**BD:** 03/07/20 **BW:** 92 **WW:** 787 **Ratio:** 110  
**YW:** \_\_\_\_\_ **ADG:** \_\_\_\_\_

LT JOURNEY 5208 PLD  
LT RANSOM 8644  
LT SHEILA 337 PLD  
EC MAJOR IMPACT 107 PLD  
RLB MS MAK0887F  
RLB MISS MAKO 212Z  
LT QUEST 2203 PLD  
LT MOLLY 3011 PLD  
LT BLUE VALUE 7903 ET  
LT MISS BREEZY 524  
EC SILVER DISTANCE 740 PLD  
EC DYNASTY 107 PLD  
RAILE 2250 U054  
RLB MISS MAKO 056

He's the highest weaning index bull from the first calf heifer group. Extra length.

|      |        |
|------|--------|
| CE   | 3.2    |
| BW   | 1.1    |
| WW   | 36     |
| YW   | 68     |
| MILK | 18     |
| MCE  | 4.0    |
| MTL  | 36     |
| SC   | 0.8    |
| TSI  | 214.45 |
| CW   | 13     |
| REA  | 0.62   |
| FAT  | -0.010 |
| MARB | 0.15   |

# CHAPPELL FEEDLOT

Located in the Panhandle of Nebraska, Chappell Feedlot is a family owned and operated custom cattle feeding business. Since 1992, our primary goals have been to provide exceptional customer service and assistance to retained ownership customers and investment feeders. We are proud of the relationships we have built over the years and would like to thank all of our customers for bringing their high quality cattle to us to manage.

Chappell Feedlot will express the genetic potential of their customer's cattle through sorting and grid marketing, maximizing the profit potential above the cash market.

- Certified Angus Beef licensed feedyard since 2004
- Certified IMI Global Feedyard for Source and Age verification programs, Non Hormone Treated Cattle
- Risk Management Programs
- Forward contract opportunities with major packers
- Forward grain bank buying opportunities
- Ultrasound sorting to maximize efficiency and profitability
- Feeder finance options and equity advances
- Personal service & attention
- Low stress cattle handling, utilizing flags and points of balance



**Tom Williams - (308) 874-4193**  
**Billy Hall - (918) 788-3880**  
**Travis Williams (308) 874-4372**  
**Trevor Tuell (970) 630-4108**  
**Cindy Williams (308) 874-2297**  
**Roger Tuell (970) 630-3290**

**chappellfeedlotnebraska.com**

YEARLING BULLS



# Using EPDs for Selection

Cattle Evaluations use the term Expected Progeny Differences (EPD) to express genetic transmitting ability of a sire for the various traits listed. An EPD is a prediction of how future progeny of a sire are expected to perform in a particular trait relative to other sires in the analysis. The key word is “difference”. The EPD itself does not imply “good” or “bad” performance. But rather, the EPD gives a prediction of the average difference to expect in the performance of a sire’s progeny relative to other sires in the same analysis.

The EPD for a given trait on each animal in the analysis is compared to every other animal in the analysis. The EPD is reported as a plus or minus value in the unit which the trait is measured.

Each EPD reported is accompanied with an Accuracy (ACC) value. ACC is a measure of reliability regarding the EPD evaluation for a performance trait. Accuracy is reported as a decimal number between zero and one: large values indicate greater accuracy and more certainty the EPD will show little change as additional progeny information is obtained.

**Birth Weight EPD (BW)** The expected difference in average birth weight (pounds) of progeny. Birth weight reflects prenatal growth.

**Calving Ease Direct (CE)** is expressed as a difference in percentage of unassisted births in first calf heifers. A higher value indicates greater calving ease. It predicts the average difference in unassisted births with which a sire’s calves will be born when bred to first-calf heifers.

**Calving Ease Maternal (MCE)** is expressed as a difference in percentage of unassisted births in first calf daughters. A higher value indicates greater calving ease. It predicts the average difference in unassisted births with which a sire’s daughters will calve as first-calf heifers when compared to daughters of other sires.

**Weaning Weight EPD (WWT)** The expected difference in average weaning weight of calves. The evaluation reflects the genetic influence on pre-weaning growth rate.

**Yearling Weight EPD (YWT)** The expected difference in average yearling weight of progeny. The evaluation reflects genetic influence on both pre-weaning and post-weaning growth rate.

**Maternal Milk EPD (MAT)** The genetic ability of a sire’s or dam’s daughters to express in pounds of weaning weight in her calves due to her maternal ability through mothering instinct and milk.

**Total Maternal EPD (TOTMAT)** A value to predict the weaning weight performance of calves from a animal’s daughters due to genetics for growth and maternal ability. Total Maternal is calculated by adding ½ the WWT EPD to the Maternal Milk EPD.

**Scrotal Circumference EPD (SC)** The expected difference in scrotal circumference (expressed in centimeters) of a bull’s or dam’s male offspring at yearling compared to progeny of all other animals evaluated. Research has also indicated a relationship between increased SC EPD and decreased age at puberty for daughters.

Carcass records are adjusted to an age constant endpoint. Therefore selection based on any or all of the carcass merit EPD are comparable among cattle at the same age endpoint. For example selection based on increased EPD for carcass weight will result in heavier carcass weights than those animals with lower EPD for carcass weights when the cattle are harvested at the same age.

**Carcass Weight EPD (HCW)** Expected progeny differences for Carcass Weight is a predictor of pounds of retail product at a constant age endpoint. Selection for increased values should result in heavier carcasses, while selection for decreased values should result in lighter carcass weights at the same age endpoint. Carcass Weight EPD are expressed in pounds and is a predictor of the differences in hot carcass weight between parents progeny at an age constant endpoint.

**Ribeye Area EPD (REA)** Ribeye area is measured from a cross-sectional area of the longissimus dorsi muscle at the 12th rib. Ribeye area is a major component of the USDA yield grade equation and selection for increased ribeye area should result in larger ribeyes and lower yield grades between animals with the same carcass weight. Ribeye area has a positive relationship with weight, the larger the animal the larger the ribeye area. Ribeye Area EPD are expressed in square inches and is a predictor of differences in ribeye area between parents progeny at a constant age endpoint.

**Fat Thickness EPD (FAT)** Fat thickness is measured at the 12th rib and is the primary component to the USDA Yield Grade equation. Fat thickness has a negative relationship to cutability; therefore, selection base on decreased fat thickness should result in lower yield grades and leaner cattle given the same age endpoint. Fat Thickness EPD are expressed in inches and are a predictor of differences in fat thickness between parent’s progeny at an age constant endpoint.

**Marbling Score (MARB)** Marbling is a subjective measure of the amount of intramuscular fat in the ribeye muscle. Marbling score is the primary component of USDA Quality grade and selection for increased Marbling Score EPD should result in cattle with higher quality grades at the same age endpoints. Marbling score has a small genetic correlation with fat, therefore producers may select for increased marbling score EPD while not changing external fat thickness when cattle are harvested at the same age-constant endpoint. Marbling EPD is a prediction of the differences in the USDA subjective

marbling score between parent’s progeny at an age constant endpoint. Marbling is expressed in the same units as the USDA Marbling Score (see table below), see the accompanying table for USDA Marbling Score in the Carcass Section.

**Terminal Sire Index (TSI)** The AICA Terminal Sire Index (TSI) is a formal method of combining Expected Progeny Differences (EPD) – BWT, WWT, YWT, REA, HCW, MARB and FAT – into one single value on which to base selection decisions. The TSI uses estimates of the genetic relationships between traits with an economic default value based on three year rolling USDA data.

The TSI represents a dollar index per terminal progeny produced for a bull in the AICA database, ranking them for profit potential. This dollar index is to be interpreted much like single trait EPD. For example, if Sire A’s index is \$191.66 and Sire B’s index is \$200.00, then we would expect Sire B’s offspring to average \$8.34 more net return (\$200.00 minus \$191.66) than Sire A’s offspring.

## Heritabilities and Genetic Correlations

Heritability may be defined as the proportion of the observed phenotypic variation that is due to genetic variation. For example, when analyzing a group of Charolais calves from the same sire, one would expect some variation in the weaning weights. Since weaning weight is 25 percent heritable, 25 percent of the observed variation is attributable to genetics while the remaining 75 percent of the observed variation is due to environmental influences.

Traits with low heritability estimates are influenced more by environment than by genetics, thus genetic progress from selection may be slow. Traits with low heritability respond greater to the effects of crossbreeding. Since heritability is already an integral part of the EPD calculation, EPD reflect actual differences and require no adjustment.

## Accuracy

Accuracy values give us an indication of how close our estimates are to an animal’s true genetic value. Accuracy values are extremely useful to breeders in determining the reliability of an EPD. An accuracy value can range from 0.0 to 1.0, depending on the amount of information that is known about an animal for any one of the reported traits. As the amount of information included in the analysis of a trait for an animal increases, the accuracy value for that trait increases accordingly. Table 1 shows the standard error of prediction (possible change value for an EPD) at various levels of accuracy for the traits reported. You will notice that as accuracy level increases, the possible change value decreases. Still, an EPD can change from year to year even though it may have a high level of accuracy. The point to remember is that the expected change of an EPD with a high ACC is correspondingly less than those of an EPD with a lower ACC value.

The possible change of identical EPD, given different levels of accuracy can be seen in the example. Two sires have YWT EPD of +30, but different ACC values. This figure illustrates the possible range within where the true genetic value is. Sire A has an ACC of .40 with a possible change value of 23 pounds, and Sire B has an ACC of .80 with a possible change value of 8.5 pounds.

As additional information is reported and accuracy levels increase, we would expect the EPD to stay within the range of the possible change value.

Even though both sires have an EPD of +30 pounds for yearling weight; Sire B has a higher reliability that his true genetic value is within the narrower range of 21.5 to 38.5 (30 ± 8.5).

The ACC of a given EPD can help determine the amount of risk a breeder is willing to take in his breeding decisions. Let us compare the sires in the example again. Which sire is more desirable for your breeding program? The sire with the high ACC is more predictable, but the amount of genetic change that can be made is correspondingly limited as well. Sire A has the same YWT EPD, but his true genetic value may be beyond that of Sire B. Therefore Sire A could possibly increase the amount of genetic progress made, but he is also more of a risk because his true genetic value falls within a wider range.

## Possible Change Values

Accuracy values help determine the amount of risk associated with genetic repeatability, but they are not foolproof. Click on the link above to view the possible change values of an EPD with a given accuracy value (ACC). Approximately 70 percent of the time the EPD will not deviate outside of these parameters.

## Genetic Trend

This chart lists the genetic trend of the North American Charolais breed for birth weight, calving ease, weaning weight, yearling weight, maternal milk, maternal calving ease and scrotal circumference. The chart also lists the genetic trend of the US Charolais breed for hot carcass weight, ribeye area, rib fat thickness and marbling for most recent years.

Source: [charolaisusa.com/members/genetic\\_evaluation.html](http://charolaisusa.com/members/genetic_evaluation.html)



# More Pounds.

## MORE PROFIT.

Breeding good cattle isn't complicated. Cattle feeders give us the ultimate report card. According to Jared Wareham, Top Dollar Angus, *"No other option offers the greatest terminal crossbreeding value from the ranch through the feeder like a really good set of smokes or buckskins that are at least 50% Angus or Red Angus."*

Use a registered Charolais bull and genetic verification through CharAdvantage to earn more premiums.

### Why?

- Market demand ■ Predictability
- Increased weaning & yearling weights
- Easy calving ■ More live calves
- Adaptability
- Value of Charolais-cross females



AMERICAN-INTERNATIONAL CHAROLAIS ASSOCIATION

816.464.5977 • Fax: 816.464.5759

[www.CHAROLAISUSA.com](http://www.CHAROLAISUSA.com)

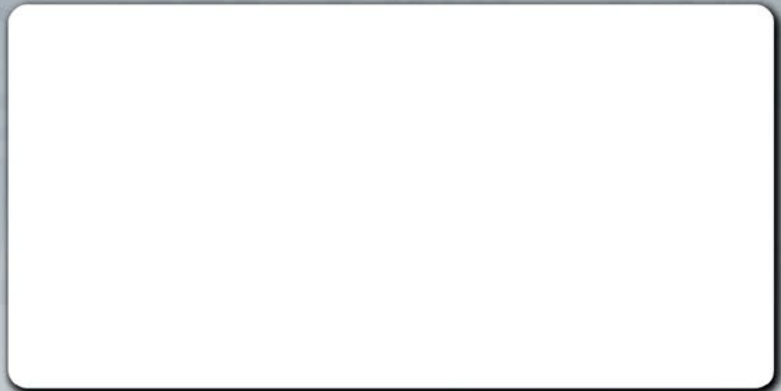
© American-International Charolais Association 2020







Robert Birkliid  
5851 122nd Ave SE  
Nome, ND 58062  
701-924-8876



Annual Production Sale  
**Fri., February 19, 2021**  
1 p.m. CT • Hub City Livestock, Aberdeen, SD